

| | |
|------------|---------|
| Project : | Date : |
| Cat. No. : | Type : |
| Notes : | Volts : |

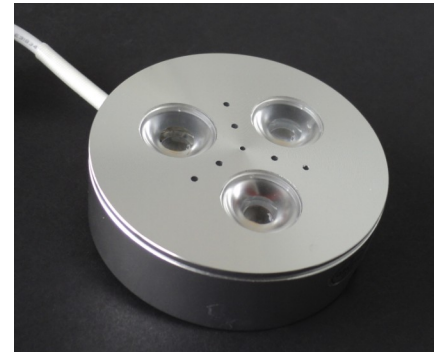
The NTL-301C ultra slim punctual source consisting of 3x1 watt, can be surface mounted or recessed. For cabinets, shelving and other applications.

ULTRA-SLIM 3X1W LED

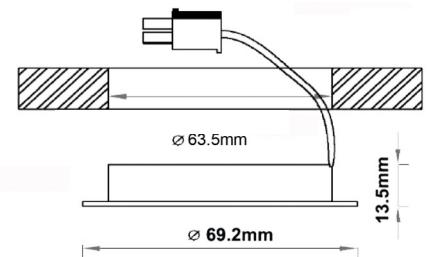
| | | |
|----------------------------|--|-------|
| CRI: | >80 | |
| Light color: | 6500K white | 255lm |
| | 3300K warm white | 230lm |
| Fixture finish:: | Aluminum alloy | |
| Fixture material: | Aluminum | |
| Optic: | 3 lens 60° | |
| Voltage: | 12VDC, wire 30cm | |
| Lamp life: | >50,000 hours L ₇₀ | |
| Maximum wattage: | 3.6 Watts max. | |
| Working temperature | -30 - +55°C | |
| Certification: | Conforms to ANSI/UL standard UL-2108 | |
| | Certified to CAN/CSA standard 22.2-9.0 | |

Power supply class II recommended:

| | |
|----------------|----------------|
| NTPSU12V-10W | 1 to 2 pieces |
| NTLPV20-12 | 1 to 5 pieces |
| NTLPV60-12 | 1 to 12 pieces |
| NTPSUCLG100-12 | 1 to 22 pieces |



Base for surface mounted



Cut-off size (recessed): Ø63.5mm

Ordering Matrix / Specification

| Model | Wattage | Color |
|-------------|---------|------------------------------|
| NTL-301C-RD | 3W | |
| | | 65 - (6500K) 33 - (3300K) |

Accessories:

NTL-CON-6B: Connector 6 plugs
 NTL-EXT-12V-1M: Extension 1 meter



Natech Industrie

3154 boulevard Industriel, Laval, QC, H7L 4P7 T: (450) 629-1169, F: (450) 629-1168, www.natechlighting.com, info@natechlighting.com

This specification is valid as of 2014-09 and is subject to change without notice. Please confirm with the manufacturer before placing an order.
 Copyright 2014 Natech Industrie. All rights reserved.