

Project :	Date :
Cat No. :	Type :
Notes :	Volts :

Description:

The **NTALB-71-110S-110R** LED bar design provides a unique linear lighting solution combining style, performance and durability for new construction, while reducing constructions and operating costs through installation time, energy savings and maintenance free application.

Housing:

The **NTALB-71-110S-110R** is a high precision extruded anodized aluminum that can accept a LED linear source from normal to high power.

Lens:

1 polycarbonate lens sliding in the profile

PC PC diffuser

Application/Installation:

The **NTALB-71-110S-110R** LED bar is easy to install simply screw the profile into drywall and plaster over then add the diffuser for a beautiful finish.

Consult factory for damp application or splash area using our silicone jacketed IP67 sources. **(WP)**

Voltage:

12 VDC
24 VDC

Electrical and Electronics:

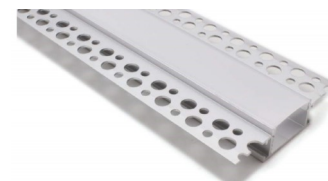
High quality diodes tested (LM80) and certified life cycle for 60,000 hours (L80).

All certified electrical and electronic components have been re-tested over the years for compatibility within products and for specific applications. All products exceed current standards.

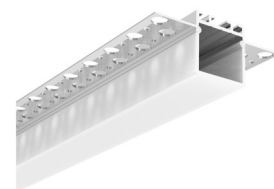
Power supply not included, consult factory. Consult the LED specification sheet for the appropriate optional dimmers and controls combination for your project.

Homologation:

Conforms to ANSI/UL standard UL-2108
Certified to CAN/CSA standard 22.2-9.0



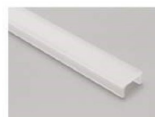
NTALB-71



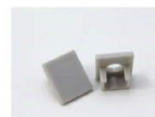
NTALB-110S



NTALB-110R



PC diffused cover



End cap with hole
End cap without hole



JC180



JC90

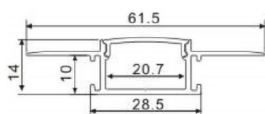


JC120

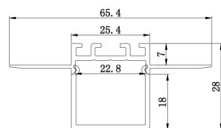
Ordering Matrix/Specification

Model	Bar	Length	Lens	LED**	Color	Volts
NTALB						
	71 110S 110R	1000mm 2000mm XX mm	PC Diffuser	UT30 UT30WP UT60 UT60WP UT120 UT120WP UT120 RGB+WH	VWW (2400K) WW(2700,3000,3500K) NW (4100K) WH (5000K) R (red) B (blue) V (green) A (amber)	12VDC 24VDC

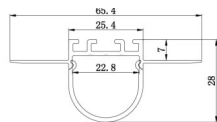
Consult factory for special length



NTALB-71



NTALB-110S



NTALB-110R

HP30 HP30WP HP120 HP120WP HP147 HP147WP
--

VWW (2400K) WW (3000K) NW (4100K) WH (5000K) R (red) B (blue) V (green) A (amber)
--

UT39K CCT (White)

(2700-6500K)

RGB 150 RGB 150WP
RGB 300 RGB 300WP
RGB 600 RGB 600WP

** Consult the LED linear source and driver data

Natech Industrie

3154 boulevard Industriel, Laval, QC, H7L 4P7 T: (450) 629-1169, F: (450) 629-1168, www.natechlighting.com, info@natechlighting.com

This specification is valid as of 2019-01 and is subject to change without notice. Please confirm with the manufacturer before placing an order.
Copyright 2014 Natech Industrie. All rights reserved.

Project :

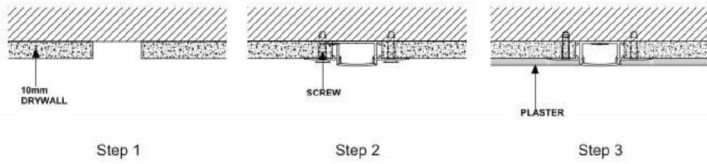
Date :

No Cat. :

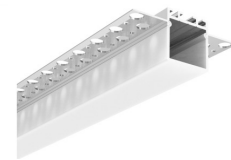
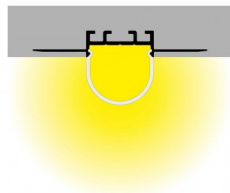
Type :

Notes :

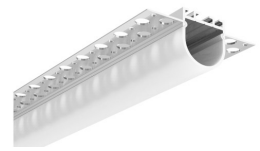
Volts :



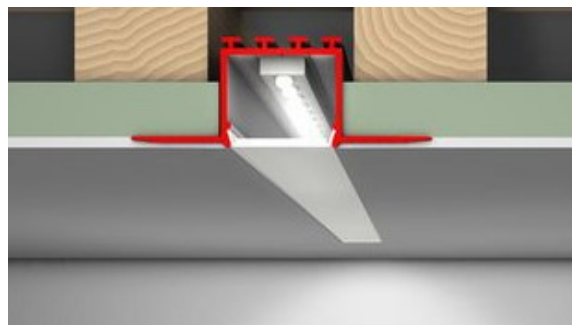
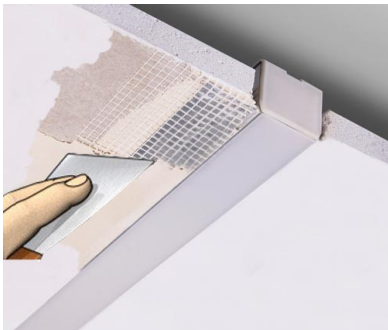
NTALB-71



NTALB-110S



NTALB-110R



Natech Industrie

3154 boulevard Industriel, Laval, QC, H7L 4P7 T: (450) 629-1169, F: (450) 629-1168, www.natechlighting.com, info@natechlighting.com

This specification is valid as of 2018-08 and is subject to change without notice. Please confirm with the manufacturer before placing an order.
Copyright 2014 Natech Industrie. All rights reserved.