

Project :

Date :

Cat. No. :

Type :

Notes :

Volts :

Applications:

Ideal for areas where intelligent and RGB LED solutions are required.

- For decor, ambiance and public safety.
- Architectural accentuation with warm and cool white or ambiance creation with RGB versions.
- Battery back-up for emergency path of egress.
- Remote control operation available.

Suitable for indoor architectural, hospitality, commercial and residential applications.

Look for other LEDIX IP56 rated products for outdoor applications.

Housing:

Stainless steel housing polished or painted aluminium precision fit parts and assembly. Available semi recessed battery backup module.

Source:

- 0.56W Cool white 5900K 20 lumens
- 0.42W Warm white 3100K 14 lumens
- 0.28W In single color source
 - RED = 630nm
 - Green = 520nm
 - Blue = 459nm
- 0.84W For RGB

Finish:

Available in:

- Polished stainless steel finish
- Silver aluminium powder coated
- Graphite powder coated aluminium
- Old gold powder coated aluminium
- White
- Black

Options:

Choose one of the following:

1. Standard (IP44)
3. Built-in battery backup (IP20)

Mounting:

Standard Timo series can be surface mount and only for 07 Timo with options such as battery backup, are chosen, can be recessed.

Certification :

Conforms to ANSI/UL standard UL-2108
Certified to CAN/CSA standard 22.2-9.0

Power supply requirements:

Requires a 12VDC output power supply and can also operate with a 14VDC source for automotive or RV applications.

Leads, connectors and power supply are supplied separately.

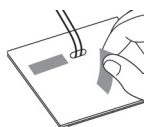
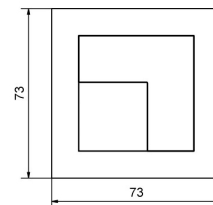
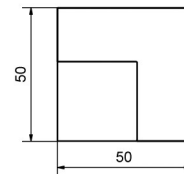
* RGB external controller needed sold separately.



06 Standard



07 Standard



Ordering Matrix / Specification

Model	Type	Installation	Voltage	Function(s)	Finish color	Color
NTWL	06= Timo 07= Timo (with square plate)	1- Surface 2- Semi-recessed	1 (12volts)	1- Standard 2- Built-in PIR motion sensor 3- Built-in battery backup	1- Aluminium 2- Stainless steel 3- Graphite 4- Old gold 5- White 6- Black	1- White 2- Warm white 3- Red 4- Green 5- Blue 6- RGB

* For led controller ask factory



Natech Industrie

3154 boulevard Industriel, Laval, QC, H7L 4P7 T: (450) 629-1169, F: (450) 629-1168, www.natechlighting.com, info@natechlighting.com

This specification is valid as of 2019-08 and is subject to change without notice. Please confirm with the manufacturer before placing an order.
Copyright 2014 Natech Industrie. All rights reserved.