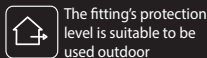
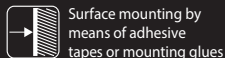


ledix

LED lighting fitting TICO



TICO is a high quality LED fitting with decorative and application features. It is used for lighting corridors, passageways, for decorative lighting of furniture and lighting arrangement in the interior design.

The features of the fitting:

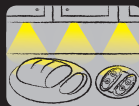
- easy mounting by means of double-sided adhesive tape or mounting glues,
- protection degree IP44 allows for outdoor mounting
- excellent lighting parameters obtained by applying the highest quality LED diodes by CREE
- repeatability of the light colour
- high lighting output with minimum power consumption
- high quality and durability estimated to light continuously for five years (~40 000 h).

CAUTION:

- Power supplies of ZNP and ZNN series and of ZNM series in 14 V DC version by Zamel are dedicated to supply the fittings.
- Power supply should be adjusted to the number of powered fittings.



Application:



zameL

14 V DC

LED lighting fitting

TICO

IP44

ledix

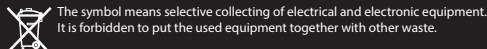
zameL

Zamel Sp. z o.o.
PL 43-200 Pszczyna, ul. Zielona 27, Poland
tel: +48 32 449 15 00, fax: +48 32 449 15 02
e-mail: ledix@ledix.pl, www.ledix.pl

14 V DC; IP44
weight: 46 g



Declaration of Conformity is on www.ledix.pl




04-111 ENG Ver. 01

TECHNICAL DATA

| | | |
|------------------------------|---------------------|------------|
| Supply voltage | 14 V DC | |
| Power consumption | 0,28 W – cold white | |
| | 0,42 W – warm white | |
| | 0,28 W – red | |
| | 0,28 W – green | |
| | 0,28 W – blue | |
| | cold white | warm white |
| Colour rendering index R_a | 71 | 80 |
| Colour temperature T_C [K] | 5900 | 3100 |
| Luminous flux Φ [lm] | 10 | 7 |
| Luminous efficiency [lm/W] | 36 | 17 |

IP44  Protection degree suitable for outdoor use

2xLED  Light source - two LED diodes

 The fitting cooperates with photovoltaic cells

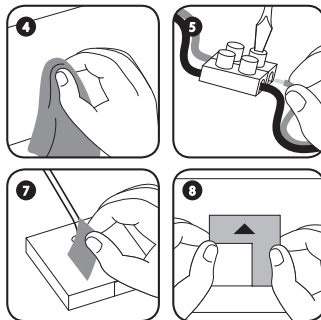
const  Built-in LED diode current stabilization system

MOUNTING

TICO fitting is designed to be mounted by means of adhesive tape or mounting glues.

The device is designed for single-phase installation and must be installed in accordance with standards valid in a particular country. Installation, connection and control should be carried out by a qualified electrician staff, who act in accordance with the service manual and the device functions.

1. Disconnect power supply by the phase fuse, the circuit-breaker or the switch-disconnector combined to the proper circuit.
2. Check if there is no voltage on connection cables by means of a special measure equipment.
3. Connect the 14 V DC power supply to 230 V AC.
4. Prepare the surface to which the fitting is to be mounted - the surface must be clean and dry.
5. Connect the output cables of the power supply with the fitting wires with proper polarity (red wire of the fitting means „+“ power).
6. During installation, use the mounting examples shown in diagrams 1 and 2.
7. Apply adhesive tape or glue to the bracket to mount the fitting.
8. Tighten the fitting to the mounting surface.
9. Switch on the power supply from the mains.
10. Check if the fitting works properly.



INSTALLATION EXAMPLE

Figure 1.
Fittings connected in a parallel way. The power supply is chosen according to the number of fittings.

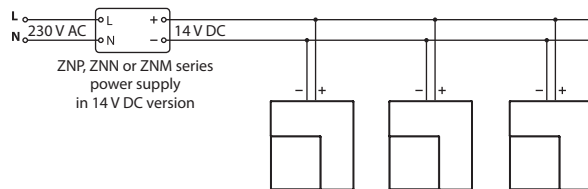
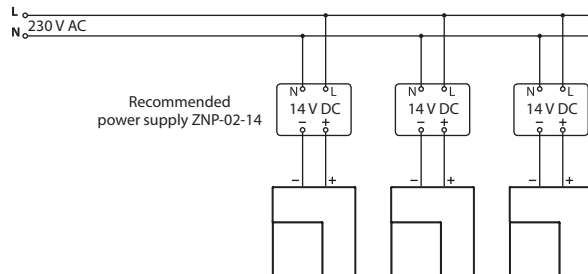


Figure 2.
Each fitting is supplied separately. The power supply is chosen according to the power of a single fitting.



CAUTIONS

- 14 V DC power supplies from the Zamel product offer (ZNP, ZNN, ZNM series) should be used to supply the fittings.
- Power supply must be chosen according to the amount of fittings and the way of their installation.
- The light source in fittings is not replaceable - if damaged, replace the entire fitting.
- In case of fittings with standard light colours, the red wire means „+“ power.
- The manufacturer is not liable for damage caused by improper installation and use of the product.