

**RF Wall Mounted Touch Panel**



- Feature**
- Backlight
  - Glass interface(White & Black)
  - Touch sensitive
  - Adjust brightness



**Parameter**

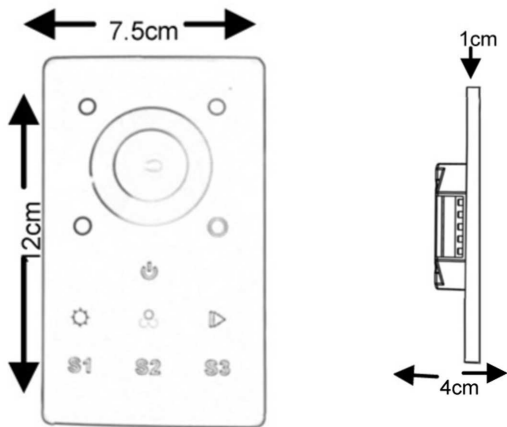
**Remote**

Part No.	Operation Voltage	Operation Frequency	DIMENSIONS ø/h (mm)	Remarks
SR-2830-SC	12-24VDC	434MHz	86x86x29.1	Touch Sensor

**Receiver**

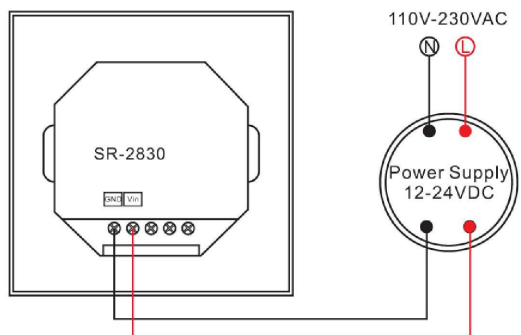
Part No.	Input Voltage	Current	Output	Remarks
SR-1009EA	12-36VDC	4x8A	4x(96-288)W	Constant voltage
SR-1009FA7	12-36VDC	4x700mA	4x(8.4-25.2)W	Constant current

**Product Size**

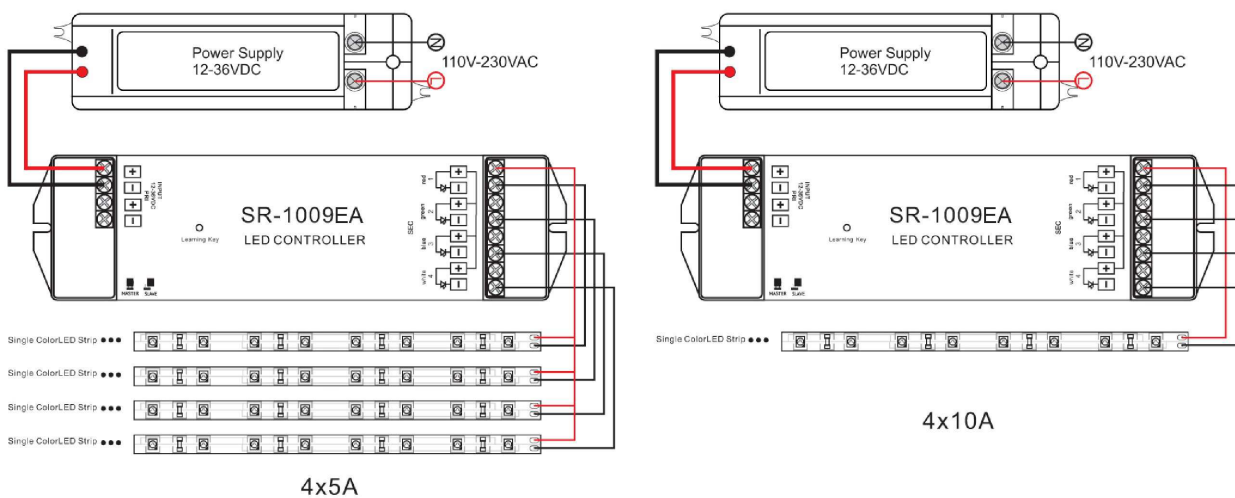


### Wiring diagram

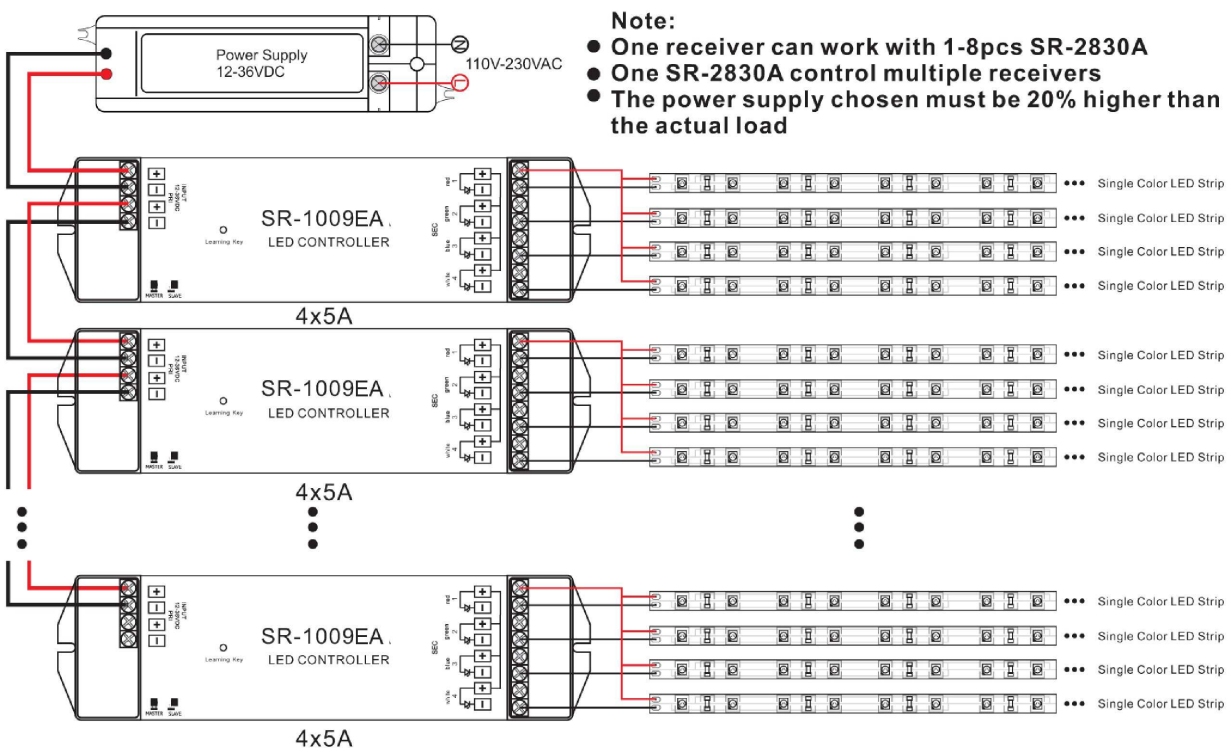
#### 1) Sender Connection Diagram



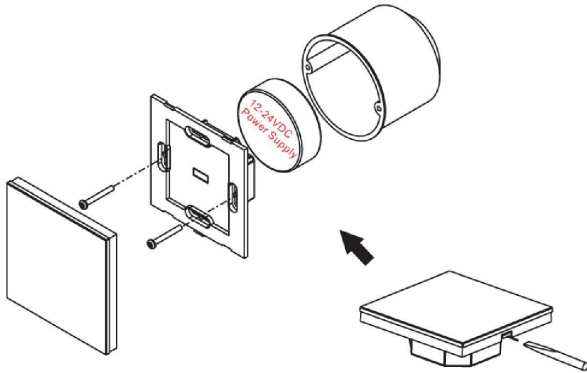
#### 2) Receiver Connection Diagram for Single Unit



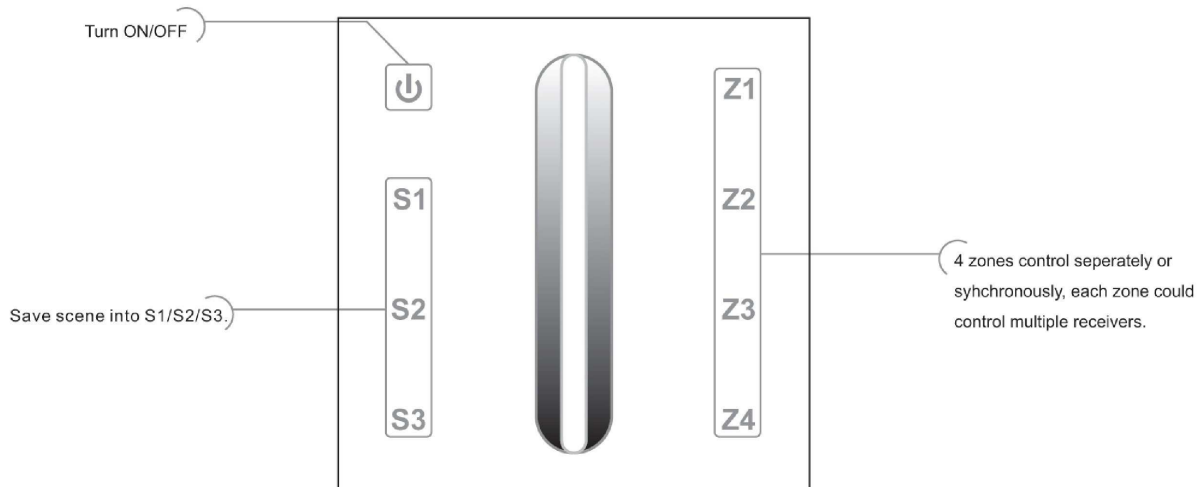
#### 3) Receiver Connection Diagram for Multiple Units



### Installation



### Description of buttons



### Operation

#### 1. Learning ID with SR-1009 series:

Click learning button on RF receiver (SR-1009XX)→

Short Touch a zone button Z1,Z2,Z3 or Z4 (sender 2830)→Touch dimming slider

The light flick means ID learnt successfully.

Touch zone button Z1/Z2/Z3/Z4 separately over 2 seconds, which will turn ON/OFF separately.

The backlight blue is ON for the zone, yellow is OFF for the zone.

Notice : Each sender can control 4 different zones separately, each zone can be learned endless receivers , so one sender can cont rol as many receivers as you can.

#### 2. Save and replay

Save: Touch dimming slider to get a color→

Hold any button of S1,S2 or S3 over 2 seconds(4zones work together)

The light flick means successfully saved.

Replay: Short touch button S1,S2 or S3 →Replay the scene just saved.

#### Note:

- This controller is RF signal to receivers, no need cable.
- The DC version need a driver 12/24V.

### **Safety & Warnings**

- 1) The product shall be installed and serviced by a qualified person.
- 2) IP20. Please avoid the sun and rain. When installed outdoors, please ensure it is mounted in a water proof enclosure.
- 3) Always be sure to mount this unit in an area with proper ventilation to avoid overheating.
- 4) Please check if the output voltage of any LED power supplies used comply with the working voltage of the product.
- 5) Never connect any cables while power is on and always assure correct connections to avoid short circuits before switching on.
- 6) Please ensure that the cable is secured tightly in the connector
- 7) For update information please consult your supplier.