

Project :

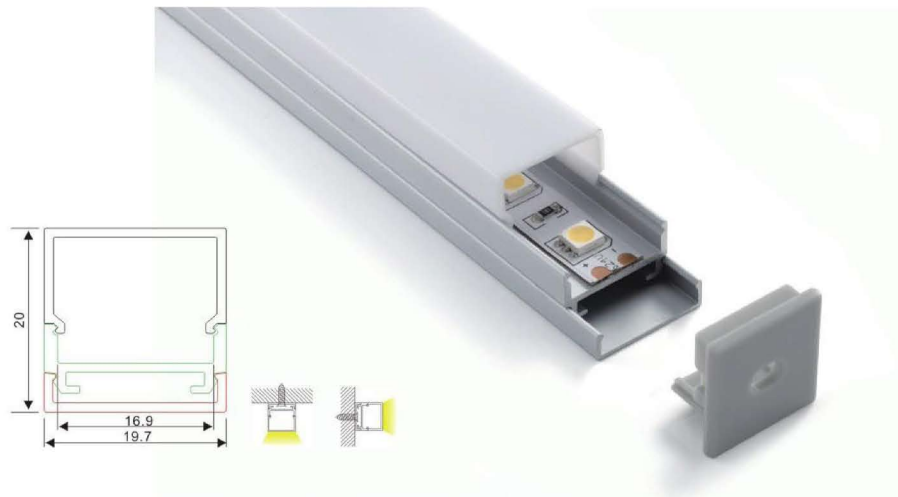
Date :

Cat No. :

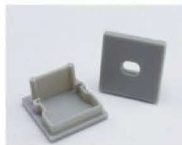
Type :

Notes :

Volts :



NTALB-11



End cap with hole
End cap without hole



Aluminum profile



Aluminum profile (for strips)



Mounting profile



PMMA opal matte cover
PMMA semi-clear cover



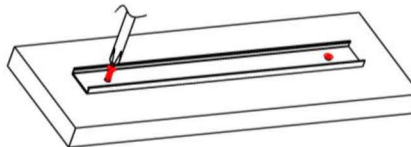
FC

Steps of Installation with the base

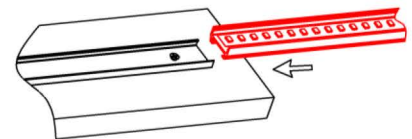
1. Stick the led strips



2. Mounting the profile B on the location



3. Slide the profile A into the B



4. Click the diffuser cover



5. Install the end caps

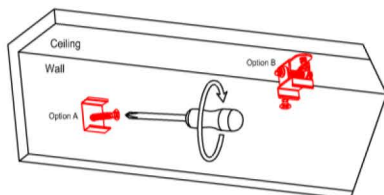


6. Installation completed .

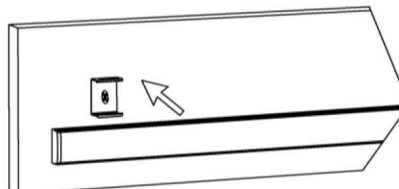


or with clips without the base

Install the mounting clip chosen



Click the fixture to the mounting clip



Installation completed

