

Project :

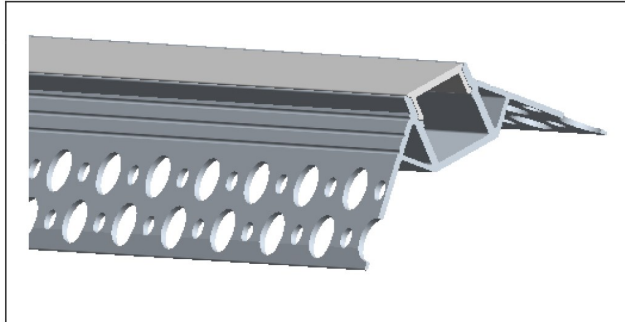
Date :

Cat No. :

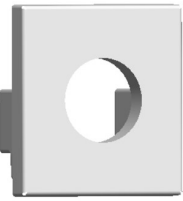
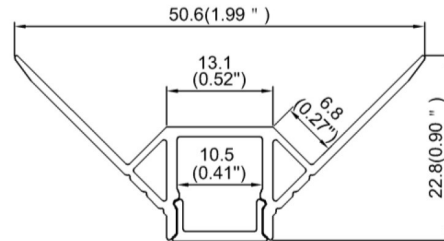
Type :

Notes :

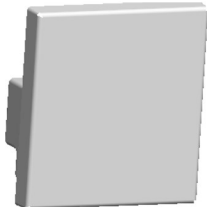
Volts :



### Dimension



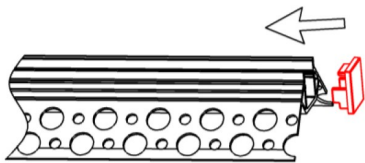
End Cap With Hole(ABS)



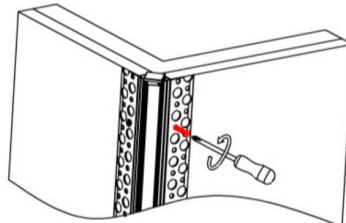
End Cap Without Hole(ABS)

### Steps of Installation

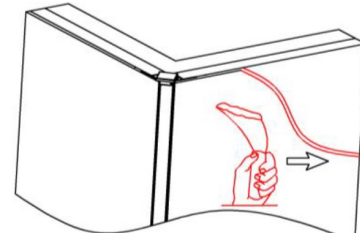
1. Click the end caps



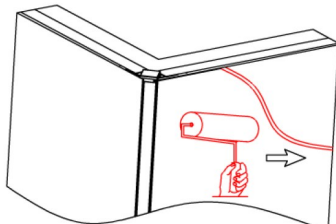
2. Mounting the profile



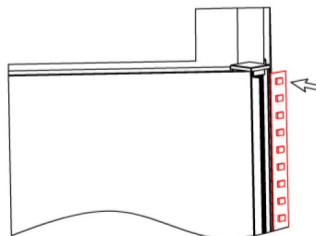
3. Plaster on the fixture & drywall



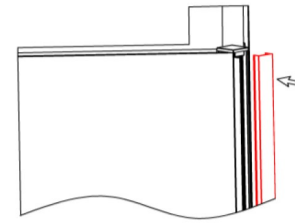
4. Painting on the fixture & drywall



5. Stick the LED strip



6. Click the diffused cover



7. Installation completed

