

Project :

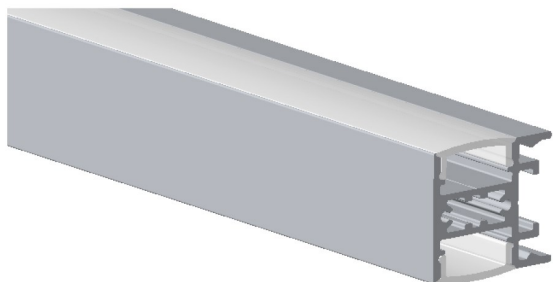
Date :

Cat No. :

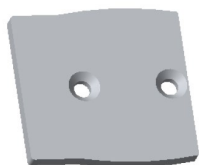
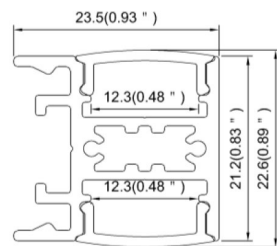
Type :

Notes :

Volts :



Dimension



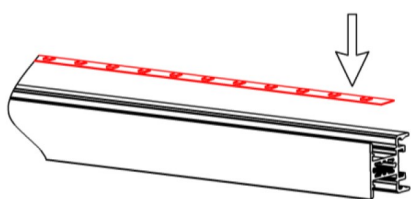
End Cap (metal)



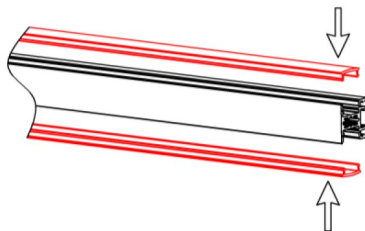
Mounting clip

Steps of Installation

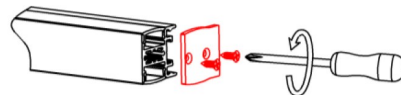
1. Stick the LED strip



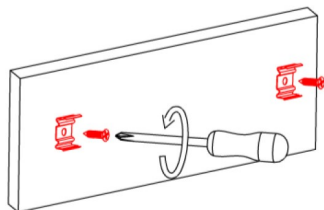
2. Click the diffused cover



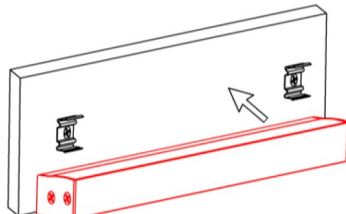
3. Fix the end caps with screws



4. Mounting the clips with screws .



5. Fix the profile with mounting clips



6. Installation completed

