

Project :	Date :
Cat. No :	Type :
Notes :	Volts :

Description:

The **NTALB-183** LED bar is a led profile with anti reflection plate that projects wall washer style lighting.

Housing:

The **NTALB-183** is a high precision extruded anodized aluminum that can accept a LED linear source from normal to high power. Each assembled Led Bar included two (2) aluminum end caps screwed.

Lens:

The lens is asymmetric frosted which can light up walls evenly.

Mounting:

Mounts directly on surface on bottom of wall or surface or semi recessed on ceiling.

FC Fixed clips (set of 2)

FCS Special clips

Application/Installation:

The **NTALB-183** LED bar can be installed for or down light diffusion

Voltage:

12 VDC
24 VDC

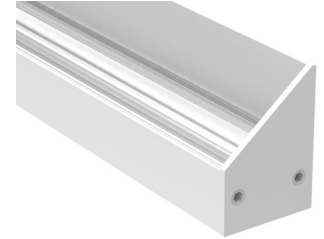
Electrical and Electronics:

High quality diodes tested (LM80) and certified life cycle for 60,000 hours (L80). All certified electrical and electronic components have been re-tested over the years for compatibility within products and for specific applications. All products exceed current standards.

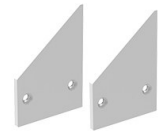
Power supply not included, consult factory. Consult the LED specification sheet for the appropriate optional dimmers and controls combination for your project.

Homologation:

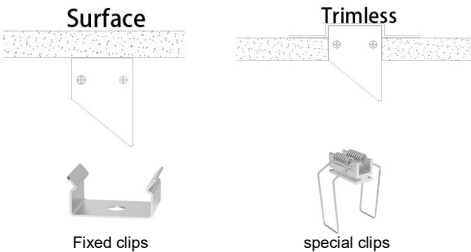
Conforms to ANSI/UL standard UL-2108
Certified to CAN/CSA standard 22.2-9.0



NTALB-183



Endcaps



Ordering Matrix / Specification

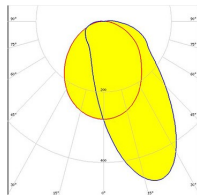
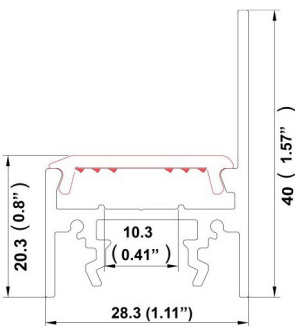
Model	Bar	Length	Lens	Mounting	LED**	Color	Volts
NTALB	183	1000 mm 2000 mm XX mm*	Asy Asymmetric	FC Fixed clips FCS Special clips	UT30 UT30 WP UT60 UT60 WP	VWW (2400K) WW (2700,3000,3500K) NW (4100K) WH (5000K) R (Red)*** B (Blue)*** G (Green)*** A (Amber)***	12VDC 24VDC
					HP30 HP60 HP120 HP240 VHP64	VWW (2400K) WW (3000K) NW (4100K) WH (5000K) R (Red)*** B (Blue)*** G (Green)*** A (Amber)***	
					UT39K CCT (Blanc)	(2700-6500K)****	
					RGB 150		
					RGB 300		
					RGBW 192		

* Consult factory for special lengths.

** Consult the LED linear source and driver data sheets for available wattages and characteristics.

*** Consult Factory

**** Color Correction



Natech Industrie

1995 Francis Hughes, Laval H7S 2G2 T: (450) 629-1169, F: (450) 629-1168, www.natechlighting.com, service@natechlighting.com

This specification is valid as of 2022-09 and is subject to change without notice. Please confirm with the manufacturer before placing an order. Copyright 2014 Natech Industrie. All rights reserved.