

Project :

Date :

Cat. No.:

Type :

Notes :

Volts :

The NTCTRL-3C-12V/24V is a touch panel dimmer used for controlling a variety of RGB LED lamp 12 volts or 24 volts.

**Low voltage Touch panel RGB control**  
**For one gang electrical box installation**  
**(with adapted power supply)**

**Output voltage:** 12VDC or 24VDC

**Output:** 3 channels

**Static power consumption:** <1W

**Output current:** <4A each channel

**Output power:** 12V <144W

24V <288W

**Working temperature:** -20 to 60°C

**Certification:**

**CE RoHS**



Change to static or dynamic color  
in color circle



19 kinds of dynamic mode switching



Turn on/off dimmer at any state



20 kinds of static mode switching



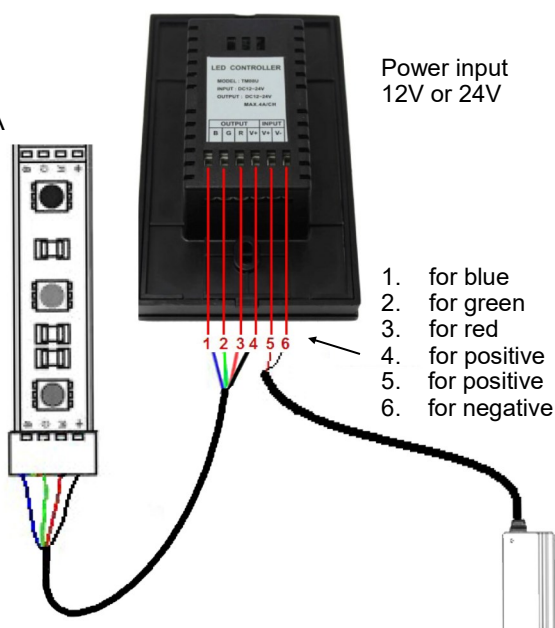
Increase/reduce brightness or speed when static state



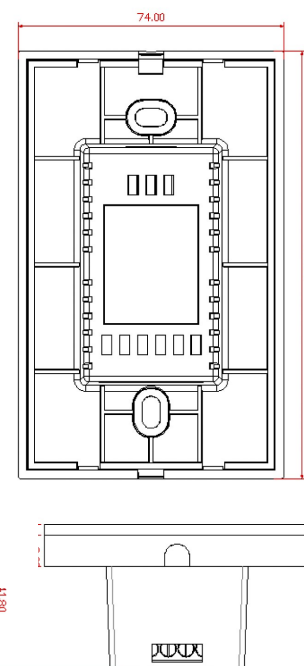
Available in black or white

**Power output**  
Output voltage is 12 or 24V  
Max total output current is 8A

**Power input**  
12V or 24V



12VDC or 24VDC  
Class II power supply



Project :	Date :
Cat. No.:	Type :
Notes :	Volts :

Dynamic mode shown in the below table

Mode No.	Function	Mode No.	Function	Mode No.	Function
1	red burst flashing	8	Three-color jumping	15	purple gradually fades
2	green burst flashing	9	six-color jumping	16	white gradually fades
3	blue burst flashing	10	red gradually fades	17	three-color gradually fades
4	yellow burst flashing	11	yellow gradually fades	18	seven-color gradually fades
5	white burst flashing	12	green gradually fades	19	seven-color gradual changing
6	Three-color burst flashing	13	cyan-blue gradually fades		
7	Three-color flashing	14	blue gradually fades		

Static mode shown in the below table

No.	Mode	No.	Mode	No.	Mode
1	Red	8	Cyan	15	Brown
2	Orange	9	Light-blue	16	White
3	Deep-yellow	10	Sky-blue	17	Ivory
4	Yellow	11	Blue	18	Pink-white
5	Light-yellow	12	Deep-blue	19	Yellow-white
6	Green	13	Blue-purple	20	Blue-white
7	Light green	14	Purple		

Project :	Date :
Cat. No.:	Type :
Notes :	Volts :

### INSTRUCTIONS

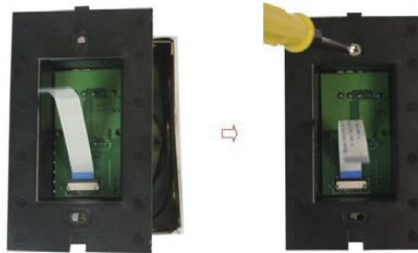
1. Connect wiring according to the application
2. Open the panel  
Gently pry gaps in touch panel with a screwdriver and then you can slowly remove the panel



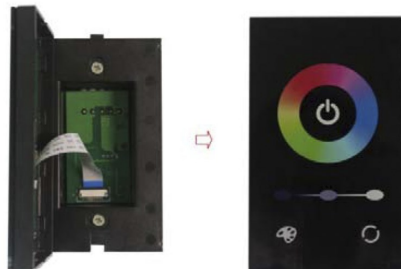
3. Install switch base  
Remove the ribbon cable. Press pull out to remove the ribbon cable, push in to press it hard. the place which marked by a red circle and



Put touch panel controller in the cassette base on the wall on the wall, screw it on the wall, then install the switch



4. Cover touch panel  
Look at the direction of touch the touch panel panel, install the ribbon cable and then cover



### REMARKS:

1. Connect the load wire at first following by the power wire, **Please ensure short circuit can occur between connecting wire before you turn on the power;**
2. The supply voltage of controller ranges in 12VDC or 24VDC it may burn out the controller once exceed the voltage ranges.