

Project :	Date :
Cat No. :	Type :
Notes :	Volts :

Description:

The **NTALB-110S-110R** LED bar design provides a unique linear lighting solution combining style, performance and durability for new construction, while reducing constructions and operating costs through installation time, energy savings and maintenance free application.

Housing:

The **NTALB-110S-110R** is a high precision extruded anodized aluminum that can accept a LED linear source from normal to high power.

Lens:

1 polycarbonate lens sliding in the profile

PC PC diffuser

Application/Installation:

The **NTALB-110S-110R** LED bar is easy to install simply screw the profile into drywall and plaster over then add the diffuser for a beautiful finish.

Consult factory for damp application or splash area using our silicone jacketed IP67 sources. **(WP)**

Voltage:

12 VDC
24 VDC

Electrical and Electronics:

High quality diodes tested (LM80) and certified life cycle for 60,000 hours (L80).

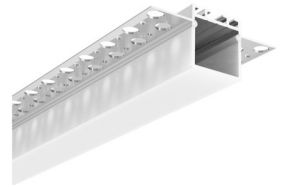
All certified electrical and electronic components have been re-tested over the years for compatibility within products and for specific applications. All products exceed current standards.

Power supply not included, consult factory. Consult the LED specification sheet for the appropriate optional dimmers and controls combination for your project.

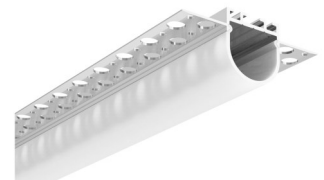
Homologation:

Conforms to ANSI/UL standard UL-2108

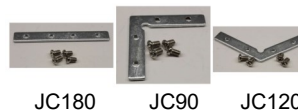
Certified to CAN/CSA standard 22.2-9.0



NTALB-110S



NTALB-110R



JC180

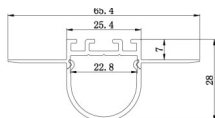
JC90

JC120

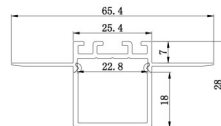
Ordering Matrix/Specification

Model	Bar	Length	Lens	LED**	Color	Volts
NTALB						
	110S 110R	1000mm 2000mm XX mm <small>Consult factory for special length</small>	PC Diffuser	UT30 (4.6W/M 450LM) UT30 WP UT60 (10W/M 896LM) UT60 WP UT120 (20W/M 1790LM) UT120 WP UT120 RGB+WH (19.2W/M) HP30 (14.5W/M 1279LM) HP30WP HP120 (19.2W/M 1600LM) HP120WP HP60 (10W/M 1070LM) HP240 (15W/M 1500LM) VHP64 (22W/M 3437LM)	VWW (2400K) WW (2700,3000,3500K) NW (4100K) WH (5000K) R (red) B (blue) V (green) A (amber)	12VDC 24VDC
				HP30 (14.5W/M 1279LM) HP30WP HP120 (19.2W/M 1600LM) HP120WP HP60 (10W/M 1070LM) HP240 (15W/M 1500LM) VHP64 (22W/M 3437LM)	VWW (2400K) WW (3000K) NW (4100K) WH (5000K) R (red) B (blue) V (green) A (amber)	
				UT39K CCT (White)	(2700-6500K)	
				RGB 150 RGB 150WP		
				RGB 300 RGB 300WP		
				RGB 600 RGB 600WP		

** Consult the LED linear source and driver data

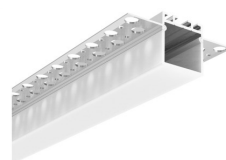
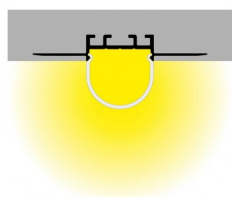
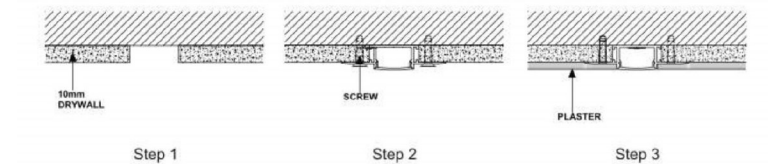


NTALB-110R

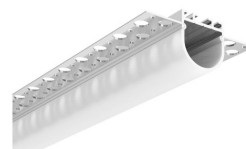


NTALB-110S

Project :	Date :
No Cat. :	Type :
Notes :	Volts :



NTALB-110S



NTALB-110R

