

Project :	Date :
Cat. No :	Type :
Notes :	Volts :

Description:

The **NTALB-07** LED bar design provides a unique linear lighting solution combining style, performance and durability in a narrow strip, while reducing constructions and operating costs through installation time, energy savings and maintenance free application.

Housing:

The **NTALB-07** is a high precision extruded anodized aluminum that can accept a LED linear source from normal to medium power.

Lens:

Precision fit extruded acrylic snap-in slightly rounded diffusing lens available in:

FR Frosted
OP Opal (white)
BK Noir PC

Mounting:

Mounts directly on the surface
FC Fixed clips (set of 2)

Application/Installation:

The **NTALB-07** LED bar can be installed for up, or down applications for 90° light diffusion. Consult factory for damp application or splash area using our silicone jacketed IP67 sources. (**WP**)

Voltage:

12 VDC
24 VDC

Electrical and Electronics:

High quality diodes tested (LM80) and certified life cycle for 50,000 hours (L70).

All certified electrical and electronic components have been re-tested over the years for compatibility within products and for specific applications. All products exceed current standards.

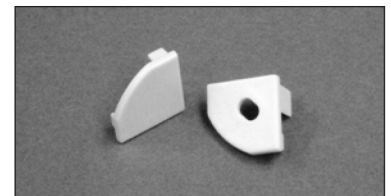
Power supply not included, consult factory. Consult the LED specification sheet for the appropriate optional dimmers and controls combination for your project.

Homologation:

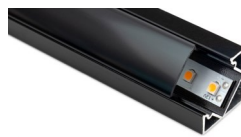
Conforms to ANSI/UL standard UL-2108
Certified to CAN/CSA standard 22.2-9.0



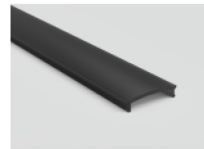
NTALB07 - FR



NTALB07 - End Caps

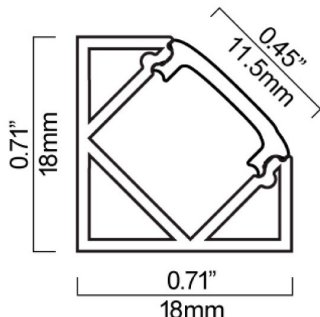


NTALB07-BK



Ordering Matrix / Specification

Model	Bar	Length	Lens	Mounting	LED**	Color	Volts
NTALB	07						
	07 (aluminium) 07BK (black)	1000 mm 2000 mm XX mm*	FR Frosted OP Opal BK Black PC	FC Fixed Clips	UT30 (4.6W/M 450LM) UT30 WP UT60 (10W/M 896LM) UT60 WP	VWW (2400K) WW (2700, 3000, 3500K) NW (4100K) WH (5000K) R (Red)*** B (Blue)*** G (Green)*** A (Amber)***	12VDC 24VDC
		* Consult factory for special lengths.			HP30 (14.5W/M 1279LM) HP60 (10W/M 1070LM) HP120 (19.2W/M 1800LM) HP240 (15W/M 1500LM) VHP64 (22W/M 3437LM)	VWW (2400K) WW (3000K) NW (4100K) WH (5000K) R (Red)*** B (Blue)*** G (Green)*** A (Amber)***	
					UT39K (20W/M 790-830LM) CCT (Blanc)	(2700-6500K)****	
					RGB 150 (7.2W/M) RGB 300 (14.4W/M)		
					RGBW192 (15.3W/M 343LM)		



Natech Industrie

1995 Francis Hughes, Laval H7S 2G2 T: (450) 629-1169, F: (450) 629-1168, www.natechlighting.com, service@natechlighting.com

This specification is valid as of 2022-09 and is subject to change without notice. Please confirm with the manufacturer before placing an order.
Copyright 2014 Natech Industrie. All rights reserved.