

Project :	Date :
Cat No. :	Type :
Notes :	Volts :

Description:

The **NTALB-17** LED bar design provides a unique linear lighting solution combining style, performance and durability in a medium width strip, while reducing constructions and operating costs through installation time, energy savings and maintenance free application.

Housing:

The **NTALB-17** is a high precision extruded anodized aluminum that can accept a LED linear source from normal to high power.

Lens:

Extruded acrylic lens setting by pressure on the aluminum profile.

FR Frosted
OP Opal (white)
BK Black PC

Mounting:

Mounts within a recess section with clips.

FC Fixed clips (set of 2)
SC Swivel metal clips (set of 2)

Application/Installation:

The **NTALB-17** LED bar can be installed for up, or down applications or side for 180° light diffusion. Consult factory for damp application or splash area using our silicone jacketed IP67 sources. (**WP**)

Voltage:

12 VDC
24 VDC

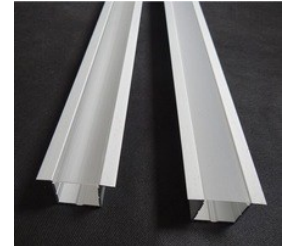
Electrical and Electronics:

High quality diodes tested (LM80) and certified life cycle for 60,000 hours (L80). All certified electrical and electronic components have been re-tested over the years for compatibility within products and for specific applications. All products exceed current standards.

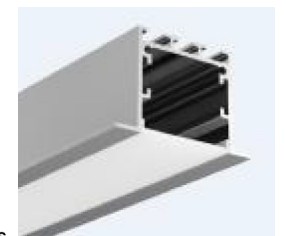
Power supply not included, consult factory. Consult the LED specification sheet for the appropriate optional dimmers and controls combination for your project.

Homologation:

Conforms to ANSI/UL standard UL-2108
Certified to CAN/CSA standard 22.2-9.0



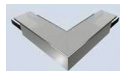
NTALB-17



NTALB-17R5



Accessories



NTALU17-B-L



NTALU17-B-T



NTALU17-B-X



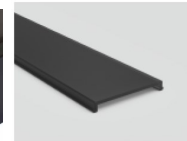
Mounting clip



Spring clip



NTALB-17R5-BK

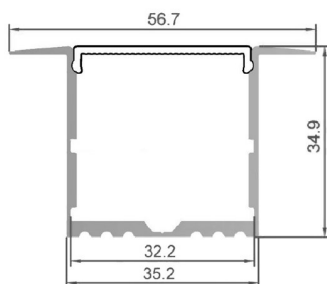


ENDCAPS

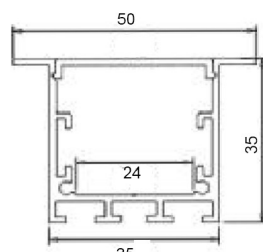
Ordering Matrix / Specification

Model	Bar	Length	Lens	Mounting	LED**	Color	Volts
NTALB							
	NTALB-17 NTALB-17R5 NTALB-17R5BK	1000 mm 2000 mm XX mm*	FR Frosted OP Opal BK Black PC	FC Fixed clips FCS Special fixed clips	UT30 UT30 WP UT60 UT60 WP UT120 UT120 WP UT120 RGB+WH	VWW (2400K) WW (2700, 3000, 3500K) NW (4100K) WH (5000K) R (Red)*** B (Blue)*** G (Green)*** A (Amber)***	12VDC 24VDC

* Consult factory for special lengths.



NTALB-17



NTALB-17R5

HP30 HP30WP HP120 HP120WP

VWW (2400K) WW (3000K) NW (4100K) WH (5000K) R (Red)*** B (Blue)*** G (Green)*** A (Amber)***
--

UT39K CCT (Blanc)

(2700-6500K)****

RGB 150 RGB 150 WP

** Consult the LED linear source and driver data sheets for available wattages and characteristics.

*** Consult Factory
**** Color Correction

RGB 300 RGB 300 WP

Natech Industrie

1995 Francis Hughes, Laval H7S 2G2 T: (450) 629-1169, F: (450) 629-1168, www.natechlighting.com, service@natechlighting.com

This specification is valid as of 2022-09 and is subject to change without notice. Please confirm with the manufacturer before placing an order.
Copyright 2014 Natech Industrie. All rights reserved.