

Project :

Date :

Cat No. :

Type :

Notes :

Volts :

### Description:

The **NTALB-18R3** LED bar design provides a unique linear lighting solution combining style, performance and durability in a medium width strip, while reducing constructions and operating costs through installation time, energy savings and maintenance free application.

### Housing:

The **NTALB-18R3** is a high precision extruded anodized aluminum that can accept a LED linear source from normal to high power.

### Lens:

Extruded acrylic lens setting by pressure on the aluminum profile.

**PC** Polycarbonate

**BK** Black PC

### Mounting:

Mounts with 2 suspension cable

**CS** Suspension cable (set of 2)

**FC** Clips (set of 2)

### Application/Installation:

The **NTALB-18R3** LED bar can be installed with 2 suspension cable to light down

Consult factory for damp application or splash area using our silicone jacketed IP67 sources. (**WP**)

### Voltage:

12 VDC

24 VDC

### Electrical and Electronics:

High quality diodes tested (LM80) and certified life cycle for 60,000 hours (L80).

All certified electrical and electronic components have been re-tested over the years for compatibility within products and for specific applications. All products exceed current standards.

Power supply not included, consult factory. Consult the LED specification sheet for the appropriate optional dimmers and controls combination for your project.

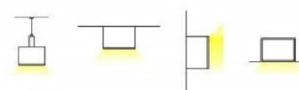
### Homologation:

Conforms to ANSI/UL standard UL-2108

Certified to CAN/CSA standard 22.2-9.0

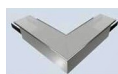


NTALB-18R3



NTALB-18R3-BK

### Accessories



NTALU18R3-L

NTALU18R3-T

NTALU18R3-X



Jonction



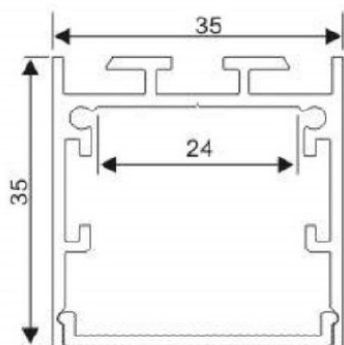
ENDCAPS



## Ordering Matrix / Specification

Model	Bar	Length	Lens	Mounting	LED**	Color	Volts
<b>NTALB</b>	<b>18R3</b>						
	18R3(aluminium) 18R3BK (black)	1000 mm 2000 mm XX mm*	<b>PC</b> Polycarbonate <b>BK</b> Black PC	<b>CS</b> suspension cable <b>FC</b> Fixed clips	<b>UT30</b> <b>UT30 WP</b> <b>UT60</b> <b>UT60 WP</b> <b>UT120</b> <b>UT120 WP</b> <b>UT120 RGB+WH</b>	<b>VWW</b> (2400K) <b>WW</b> (2700, 3000, 3500K) <b>NW</b> (4100K) <b>WH</b> (5000K) <b>R</b> (Red)*** <b>B</b> (Blue)*** <b>G</b> (Green)*** <b>A</b> (Amber)***	<b>12VDC</b> <b>24VDC</b>
					<b>HP30</b> <b>HP30WP</b> <b>HP120</b> <b>HP120WP</b>	<b>VWW</b> (2400K) <b>WW</b> (3000K) <b>NW</b> (4100K) <b>WH</b> (5000K) <b>R</b> (Red)*** <b>B</b> (Blue)*** <b>G</b> (Green)*** <b>A</b> (Amber)***	
					<b>UT39K</b> <b>CCT</b> (Blanc)	(2700-6500K)****	
					<b>RGB 150</b> <b>RGB 150 WP</b>		
					<b>RGB 300</b> <b>RGB 300 WP</b>		

\* Consult factory for special lengths.



\*\* Consult the LED linear source and driver data sheets for available wattages and characteristics.  
 \*\*\* Consult Factory  
 \*\*\*\* Color Correction

### Natech Industrie

1995 Francis Hughes, Laval H7S 2G2 T: (450) 629-1169, F: (450) 629-1168, www.natechlighting.com, service@natechlighting.com

This specification is valid as of 2022-09 and is subject to change without notice. Please confirm with the manufacturer before placing an order.  
 Copyright 2014 Natech Industrie. All rights reserved.