

Project :	Date :
Cat. No :	Type :
Notes :	Volts :

### Description:

The **NTALB-68-69-70-R** LED bar design provides a unique linear lighting solution combining style, performance and durability for new construction, while reducing constructions and operating costs through installation time, energy savings and maintenance free application.

### Housing:

The **NTALB-68-69-70-R** is a high precision extruded anodized aluminum that can accept a LED linear source from normal to high power.

### Lens:

1 polycarbonate lens sliding in the profile

**PC** PC diffuser

**BK** Black PC

### Application/Installation:

The **NTALB-68-69-70-R** LED bar is easy to install simply screw the profile into drywall and plaster over then add the diffuser for a beautiful finish.

Consult factory for damp application or splash area using our silicone jacketed IP67 sources. (**WP**)

### Voltage:

12 VDC  
24 VDC

### Electrical and Electronics:

High quality diodes tested (LM80) and certified life cycle for 60,000 hours (L80).

All certified electrical and electronic components have been re-tested over the years for compatibility within products and for specific applications. All products exceed current standards.

Power supply not included, consult factory. Consult the LED specification sheet for the appropriate optional dimmers and controls combination for your project.

### Homologation:

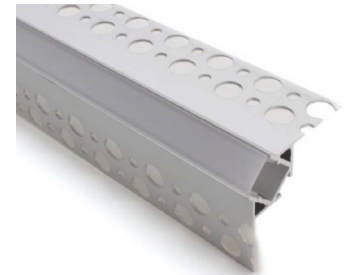
Conforms to ANSI/UL standard UL-2108  
Certified to CAN/CSA standard 22.2-9.0



NTALB-68-R



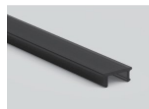
NTALB-69-R



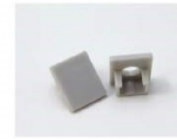
NTALB-70-R



NTALB-68BK/69BK/70RBK



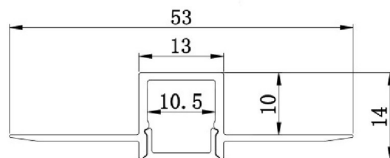
PC cover



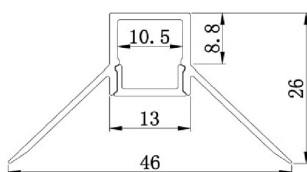
End cap with hole  
End cap without hole

### Ordering Matrix/Specification

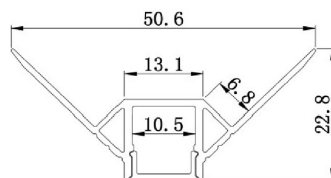
Model	Bar	Lenght	Lens	LED**	Color	Volts
NTALB						
	68 (alu) 68BK (black) 69 (alu) 69BK (black) 70 (alu) 70BK (black)	1000mm 2000mm XX mm Consult factory for special lenght	PC Polycarbonate BK Black PC	UT30 UT60	VWW (2400K) WW (2700,3000,3500K) NW (4100K) WH (5000K) R (red) B (blue) V (green) A (amber)	12VDC 24VDC
				HP30 HP120 HP147	VWW (2400K) WW (3000K) NW (4100K) WH (5000K) R (red) B (blue) V (green) A (amber)	
				UT39K CCT (White)	(2700-6500K)	
				RGB 150 RGB 300 RGB 600		



NTALB-68-R



NTALB-69-R



NTALB-70-R

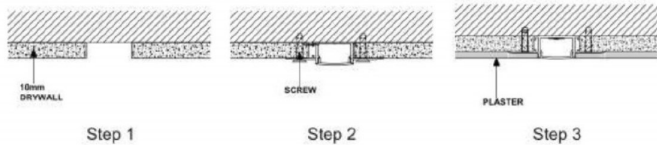
### Natech Industrie

1995 Francis Hughes, Laval H7S 2G2 T: (450) 629-1169, F: (450) 629-1168, [www.natechlighting.com](http://www.natechlighting.com), [service@natechlighting.com](mailto:service@natechlighting.com)

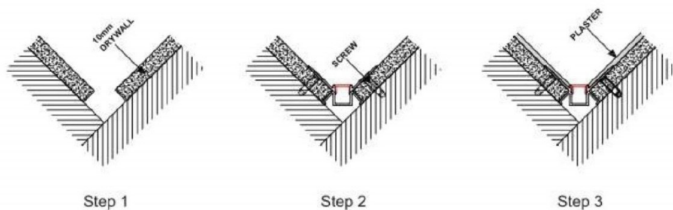
This specification is valid as of 2022-09 and is subject to change without notice. Please confirm with the manufacturer before placing an order.  
Copyright 2014 Natech Industrie. All rights reserved.

\*\* Consult the LED linear source and driver data

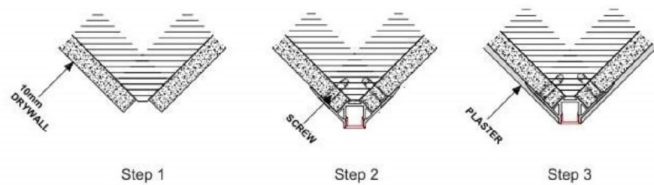
Project :	Date :
Cat. No :	Type :
Notes :	Volts :



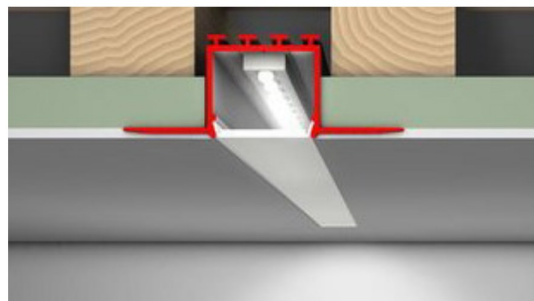
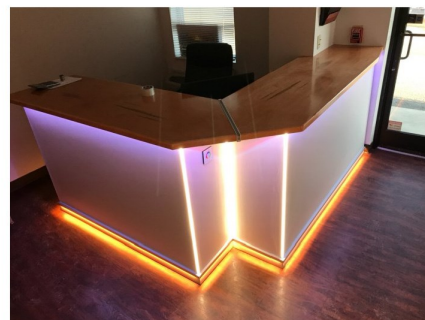
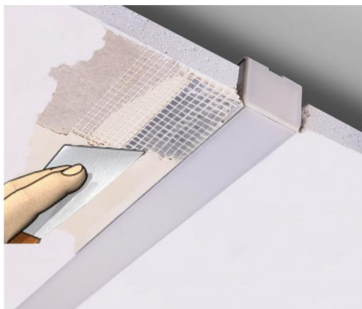
NTALB-68-R



NTALB-69-R



NTALB-70-R



### Natech Industrie

1995 Francis Hughes, Laval H7S 2G2 T: (450) 629-1169, F: (450) 629-1168, [www.natechlighting.com](http://www.natechlighting.com), [service@natechlighting.com](mailto:service@natechlighting.com)

This specification is valid as of 2022-09 and is subject to change without notice. Please confirm with the manufacturer before placing an order.  
Copyright 2014 Natech Industrie. All rights reserved.