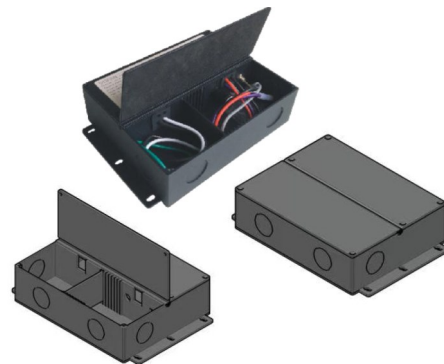
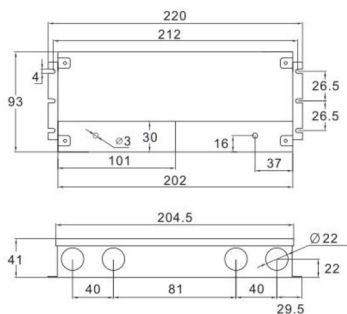


Project :	Date :
Cat. No. :	Type :
Notes :	Volts :

- Universal input, 110-277Vac
- Build in active PFC, typical power factor > 0.95, THD < 20% @ 120V Max. load
- High efficiency : up to 80%
- Load: 0.1-100%
- Short-circuit, over-temperature, over-load protection
- Full protection metal case, for dry, damp, wet location
- Flicker-free
- Suitable for LED lighting and moving sign applications
- Dim-all: Triac/0-10V/1-10V/10V PWM/Potentiometer
- Switch to PWM or Voltage Reduce output



### ■ Specification

<b>Model</b>		<b>OTM-TD100-JA12</b>
<b>Certificates</b>		FCC ETL
<b>Output</b>	DC Voltage	12V
	Rated Current	8.33A
	Rated Power	100W
	Voltage Tolerance	±0.5V
	Voltage Regulation	±0.5%
	Load Regulation	±1%
<b>Input</b>	Voltage Range	100-277VAC
	Frequency Range	47-63HZ
	Power Factor (Typ.) @ full load	0.99@120VAC 0.96@277VAC
	THD (Typ.) @ full load	<20%
	Efficiency (Typ.) @ full load	80%
	AC Current (Max.)	1.5A@100VAC
	Inrush Current (Typ.)	20A, 50%, 1.6ms
	Leakage current	<0.50mA
<b>Protection</b>	Short Circuit	shut down o/p voltage, re-power on to recover after fault condition is removed
	Over Loading	≤120% constant current limiting, auto-recovery
	Over temperature	100°C±10°C shut down o/p voltage, automatically recover after cooling.
<b>Environment</b>	Working TEMP.	-40~+60°C (see below derating curve)
	Working Humidity	20~90%RH, non-condensing
	Storage TEMP. Humidity	-40~+80°C, 10~95%RH
	TEMP. coefficient	±0.03%/°C (0~50°C)
	Vibration	10~500Hz, 5G 10min./1 cycle, period for 60min. each along X,Y,Z axes
<b>Safety&amp; EMC</b>	Safety standards	ETL
	Withstand voltage	I/P-O/P: 3.75KVAC

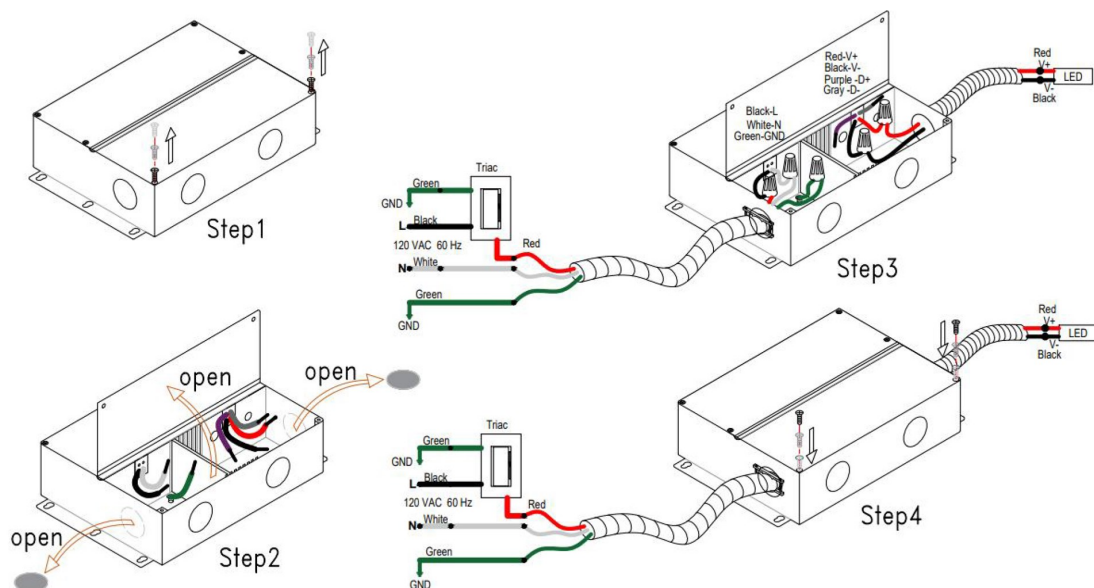
### Natech Industrie

1995 Francis Hughes, Laval, QC, H7S 2G2 T: (450) 629-1169, F: (450) 629-1168, [www.natechlighting.com](http://www.natechlighting.com), [service@natechlighting.com](mailto:service@natechlighting.com)

This specification is valid as of 2022-10 and is subject to change without notice. Please confirm with the manufacturer before placing an order.  
Copyright 2014 Natech Industrie. All rights reserved.

Project :	Date :
Cat. No. :	Type :
Notes :	Volts :

#### MLV OR TRIAC ELV WIRING DIAGRAM AND FOR PWM SWITCH ON



#### 0-10V WIRING DIAGRAM AND FOR PWM SWITCH ON

