

Project :	Date :
Cat. No. :	Type :
Notes :	Volts :

Applications:

Ideal for areas where intelligent and RGB LED solutions are required.

- For decor, ambiance and public safety.
- Architectural accentuation with warm natural and cool white or ambiance creation with RGB versions.
- Motion and twilight detection for patios, pool decks, corridors and bathrooms.
- Remote control operation available.

Suitable for indoor architectural, hospitality, commercial and residential applications.

Look for other LEDIX IP56 rated products for outdoor applications.

Housing:

Stainless steel housing polished or painted aluminium precision fit parts and assembly. Saddle mount PIR motion sensor available.

Source:

0.56W Cool white 5900K 34 lumens
0.42W Warm white 3100K 31 lumens
0.40W Natural white 4200K 43 lumens

00.84W For RGB

Finish:

Available in:

- Polished stainless steel finish
- Silver aluminium powder coated
- Graphite powder coated aluminium
- Old gold powder coated aluminium
- White
- Black

Options:

Choose one of the following:

1. Standard (IP44)
6. Built-in PIR motion sensor (IP20)



01-standard

Mounting:

Standard Moza series can be surface mount or semi-recessed with options such as motion sensor

Certification :

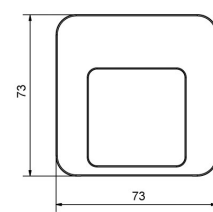
Conforms to ANSI/UL standard UL-2108
Certified to CAN/CSA standard 22.2-9.0

Power supply requirements:

Requires a 12VDC output power supply and can also operate with a 14VDC source for automotive or RV applications.

Leads, connectors and power supply are supplied separately.

* RGB external controller needed sold separately.

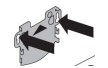


1. sticker 3M

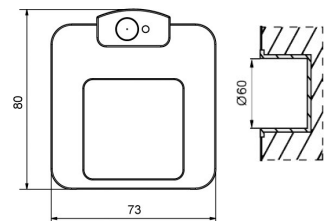


Or

2. screw plate



01-PIR or motion sensor



Ordering Matrix / Specification

Model	Installation	Voltage	Function(s)	Finish color	Color
NTWL	01	1 (12volts)			
	01= Moza				
	1- Surface		1- Standard	1- Aluminium	1- Warm
	2- Semi-recessed		6- Built-in PIR motion sensor	2- Stainless steel	2- Warm white
				3- Graphite	7- Natural white
				5- White	6- RGB
				6- Black	



Natech Industrie

1995 Francis Hughes, Laval, Qc, H7S 2G2: (450) 629-1169, F: (450) 629-1168, www.natechlighting.com, service@natechlighting.com

This specification is valid as of 2022-09 and is subject to change without notice. Please confirm with the manufacturer before placing an order.
Copyright 2014 Natech Industrie. All rights reserved.

©2015-08

Project :	Date :
Cat. No. :	Type :
Notes :	Volts :

Applications:

Ideal for areas where intelligent and RGB LED solutions are required.

- For decor, ambiance and public safety.
- Architectural accentuation with warm natural and cool white or ambiance creation with RGB versions.
- Motion and twilight detection for patios, pool decks, corridors and bathrooms.
- Remote control operation available.

Suitable for indoor architectural, hospitality, commercial and residential applications.

Look for other LEDIX IP56 rated products for outdoor applications.

Housing:

Stainless steel housing polished or painted aluminium precision fit parts and assembly. Saddle mount PIR motion sensor available and semi recessed battery backup module.

Source:

0.56W	Cool white 5900K 32 lumens
0.42W	Warm white 3100K 29lumens
0.40W	Natural white 4200K 45 lumens
0.84W	For RGB

Finish:

Available in:

- Polished stainless steel finish
- Silver aluminium powder coated
- Graphite powder coated aluminium
- Old gold powder coated aluminium
- White
- Black

Options:

Choose one of the following:

1. Standard (IP44)
6. Built-in PIR motion sensor (IP20)

Mounting:

Standard Muna series can be surface mount or semi-recessed with options such as motion sensor, are chosen.

Certification :

Conforms to ANSI/UL standard UL-2108
Certified to CAN/CSA standard 22.2-9.0

Power supply requirements:

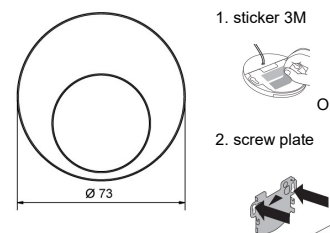
Requires a 12VDC output power supply and can also operate with a 14VDC source for automotive or RV applications.

Leads, connectors and power supply are supplied separately.

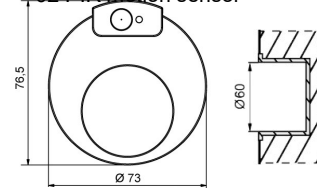
* RGB external controller needed sold separately.



02 Standard



02 PIR motion sensor



Ordering Matrix / Specification

Model	Installation	Voltage	Function(s)	Finish color	Color
NTWL	02= Muna	1 (12volts)	1- Standard 6- Built-in PIR motion sensor	1- Aluminium 2- Stainless steel 3- Graphite 5- White 6- Black	1- Warm 2- Warm white 7- Natural white 6- RGB
	1- Surface 2- Semi-recessed				



Natech Industrie

1995 Francis Hughes, Laval, Qc, H7S 2G2: (450) 629-1169, F: (450) 629-1168, www.natechlighting.com, service@natechlighting.com

Project :	Date :
Cat. No. :	Type :
Notes :	Volts :

Applications:

Ideal for areas where intelligent and RGB LED solutions are required.

- For decor, ambiance and public safety.
- Architectural accentuation with warm and cool white or ambiance creation with RGB versions.

Suitable for indoor architectural, hospitality, commercial and residential applications.

Look for other LEDIX IP56 rated products for outdoor applications.

Housing:

Standard.

Source:

0.56W Cool white 5900K 22 lumens
 0.42W Warm white 3100K 14 lumens
 0.28W In single color source
 RED = 630nm
 Green = 520nm
 Blue = 459nm
 0.84W For RGB

Finish:

Available in:

- Polished stainless steel finish
- Silver aluminium powder coated
- Graphite powder coated aluminium
- Old gold powder coated aluminium
- White
- Black

Options:

Choose one of the following

1. Standard (IP44)

Mounting:

Tera serie can be surface mount only.

Certification :

Conforms to ANSI/UL standard UL-2108
 Certified to CAN/CSA standard 22.2-9.0

Power supply requirements:

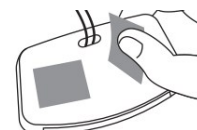
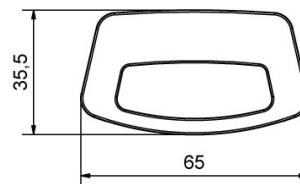
Requires a 12VDC output power supply and can also operate with a 14VDC source for automotive or RV applications.

Leads, connectors and power supply are supplied separately.

- * RGB external controller needed sold separately.



03 Standard



Ordering Matrix / Specification

Model	Installation	Voltage	Function(s)	Finish color	Color
NTWL		1 (12volts)			
	03= Tera	1- Surface	1- Standard	1- Aluminium 2- Stainless steel 3- Graphite 5- White 6- Black	1- Warm 2- Warm white 7- Natural white 6- RGB



Natech Industrie

1995 Francis Hughes, Laval, Qc, H7S 2G2: (450) 629-1169, F: (450) 629-1168, www.natechlighting.com, service@natechlighting.com

This specification is valid as of 2022-09 and is subject to change without notice. Please confirm with the manufacturer before placing an order.
 Copyright 2014 Natech Industrie. All rights reserved.

©2015-08

Project :	Date :
Cat. No. :	Type :
Notes :	Volts :

Applications:

Ideal for areas where intelligent LED solutions are required.

- For decor, ambiance and public safety.
- Architectural accentuation with warm, natural and cool white.

Suitable for indoor architectural, hospitality, commercial and residential applications.

Look for other LEDIX IP56 rated products for outdoor applications.

Housing:

Standard

Source:

0.28W Cool white 5900K 36lumens
0.42W Warm white 3100K 17 lumens
0.40W Natural white 4200K 23 lumens

Finish:

Available in:

- Polished stainless steel finish
- Silver aluminium powder coated
- Graphite powder coated aluminium
- Old gold powder coated aluminium
- White
- Black

Options:

Choose one of the following

1. Standard (IP44)

Mounting:

Standard Tico series can be surface mount only.

Certification :

Conforms to ANSI/UL standard UL-2108
Certified to CAN/CSA standard 22.2-9.0

Power supply requirements:

Requires a 12VDC output power supply and can also operate with a 14VDC source for automotive or RV applications.

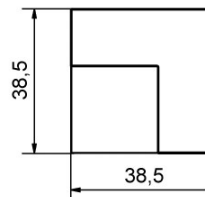
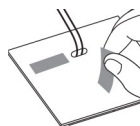
Leads, connectors and power supply are supplied separately.



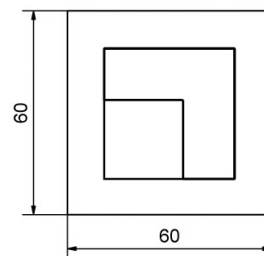
04 Standard



05 Standard



04 Standard



05 Standard



Ordering Matrix / Specification

Model	Type	Installation	Voltage	Function(s)	Finish color	Color
NTWL			1 (12volts)			
	04= Tico	1- Surface		1- Standard	1- Aluminium	1- Warm
	05= Tico (with square plate)				2- Stainless steel	2- Warm white
					3- Graphite	7- Natural white
					5- White	
					6- Black	

Natech Industrie

1995 Francis Hughes, Laval, Qc, H7S 2G2: (450) 629-1169, F: (450) 629-1168, www.natechlighting.com, service@natechlighting.com

This specification is valid as of 2022-09 and is subject to change without notice. Please confirm with the manufacturer before placing an order.
Copyright 2014 Natech Industrie. All rights reserved.

Project :	Date :
Cat. No. :	Type :
Notes :	Volts :

Applications:

Ideal for areas where intelligent and RGB LED solutions are required.

- For decor, ambiance and public safety.
- Architectural accentuation with warm, natural white and cool white or ambiance creation with RGB versions.
- Remote control operation available.

Suitable for indoor architectural, hospitality, commercial and residential applications.

Look for other LEDIX IP56 rated products for outdoor applications.

Housing:

Standard

:

0.56W Cool white 5900K 36 lumens
 0.42W Warm white 3100K 33 lumens
 0.40W Natural white 4200K 43 lumens
 0.84W For RGB

Finish:

Available in:

- Polished stainless steel finish
- Silver aluminium powder coated
- Graphite powder coated aluminium
- Old gold powder coated aluminium
- White
- Black

Options:

Choose one of the following:

1. Standard (IP44)

Mounting:

Standard Timo series can be surface mount and only for 07 Timo with optionare chosen, can be recessed.

Certification :

Conforms to ANSI/UL standard UL-2108
 Certified to CAN/CSA standard 22.2-9.0

Power supply requirements:

Requires a 12VDC output power supply and can also operate with a 14VDC source for automotive or RV applications.

Leads, connectors and power supply are supplied separately.

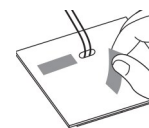
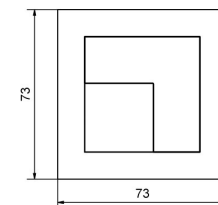
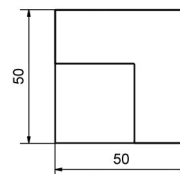
- * RGB external controller needed sold separately.



06 Standard



07 Standard



Ordering Matrix / Specification

Model	Type	Installation	Voltage	Function(s)	Finish color	Color
NTWL			1 (12volts)			
	06= Timo 07= Timo (with square plate)	1- Surface 2- Semi-recessed		1- Standard	1- Aluminium 2- Stainless steel 3- Graphite 5- White 6- Black	1- Warm 2- Warm white 7- Natural white 6- RGB

Natech Industrie

1995 Francis Hughes, Laval, Qc, H7S 2G2: (450) 629-1169, F: (450) 629-1168, www.natechlighting.com, service@natechlighting.com

This specification is valid as of 2022-09 and is subject to change without notice. Please confirm with the manufacturer before placing an order.
 Copyright 2014 Natech Industrie. All rights reserved.

Project :	Date :
Cat. No. :	Type :
Notes :	Volts :

Applications:

Ideal for areas where intelligent and RGB LED solutions are required.

- For decor, ambiance and public safety.
- Architectural accentuation with warm and cool white or ambiance creation with RGB versions.
- Motion and twilight detection for patios, pool decks, corridors and bathrooms.
- Remote control operation available.

Suitable for indoor and outdoor architectural, hospitality, commercial and residential applications.

Look for other LEDIX IP56 rated products for outdoor applications.

Housing:

Standard or motion sensor

Source:

0.56W Cool white 5900K 68 lumens
 0.42W Warm white 3100K 60 lumens
 0.58W Natural white 4200K 48 lumens
 0.84W For RGB

Finish:

Available in:

- Polished stainless steel finish
- Silver aluminium powder coated
- Graphite powder coated aluminium
- Old gold powder coated aluminium
- White
- Black

Options:

Choose one of the following:

1. Standard (IP56)
6. Built-in PIR motion sensor (IP20) 09 only

Mounting:

Standard Rubi series can be surface mount and only for 09 can be also recessed and semi-recessed with options such as motion sensor, are chosen.

Certification :

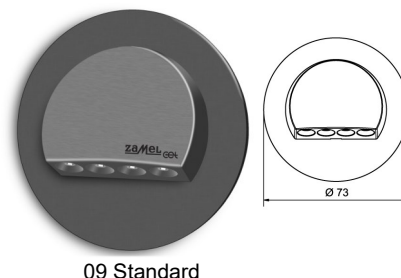
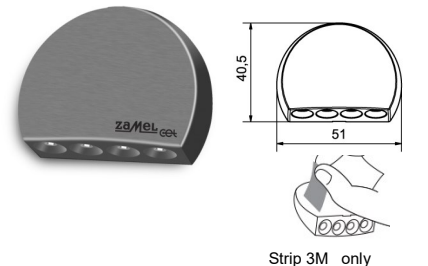
Conforms to ANSI/UL standard UL-2108
 Certified to CAN/CSA standard 22.2-9.0

Power supply requirements:

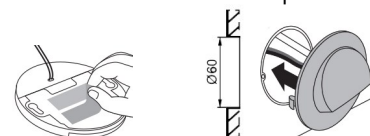
Requires a 12VDC output power supply and can also operate with a 14VDC source for automotive or RV applications.

Leads, connectors and power supply are supplied separately.

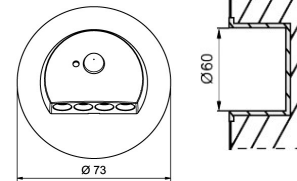
* RGB external controller needed sold separately.



1. surface with 3M
2. with clip



09 PIR motion sensor



Ordering Matrix / Specification

Model	Type	Installation	Voltage	Function(s)	Finish color	Color
NTWL			1 (12volts)			
	08= Rubi 09= Rubi (with round plate)	1- Surface 2- Semi-recessed		1- Standard 6- Built-in PIR motion sensor	1- Aluminium 2- Stainless steel 3- Graphite 5- White 6- Black	1- Warm 2- Warm white 7- Natural white 6- RGB

Natech Industrie

1995 Francis Hughes, Laval, Qc, H7S 2G2: (450) 629-1169, F: (450) 629-1168, www.natechlighting.com, service@natechlighting.com

This specification is valid as of 2022-09 and is subject to change without notice. Please confirm with the manufacturer before placing an order.
 Copyright 2014 Natech Industrie. All rights reserved.

Project :	Date :
Cat. No. :	Type :
Notes :	Volts :

Applications:

Ideal for areas where intelligent and RGB LED solutions are required.

- For decor, ambiance and public safety.
- Architectural accentuation with warm and cool white or ambiance creation with RGB versions.
- Motion and twilight detection for patios, pool decks, corridors and bathrooms.
- Battery back-up for emergency path of egress.
- Remote control operation available.

Suitable for indoor and outdoor architectural, hospitality, commercial and residential applications.

Look for other LEDIX IP56 rated products for outdoor applications.

Housing:

Stainless steel housing polished or painted aluminium precision fit parts and assembly. Saddle mount PIR motion sensor available and semi recessed battery backup module.

Source:

0.56W	Cool white 5900K 37 lumens
0.42W	Warm white 3100K 24 lumens
0.28W	In single color source
	RED = 630nm
	Green = 520nm
	Blue = 459nm
0.84W	For RGB

Finish:

Available in:

- Polished stainless steel finish
- Silver aluminium powder coated
- Graphite powder coated aluminium
- Old gold powder coated aluminium
- White
- Black

Options:

Choose one of the following:

1. Standard (IP56)
2. Built-in PIR motion sensor (IP20)
3. Built-in battery backup (IP20)

Mounting:

Standard Navi series can be surface mount (1) only and only 11 can be also surface or semi-recessed (2) and 11 with options such as motion sensor, battery backup, are chosen are recessed.

Certification :

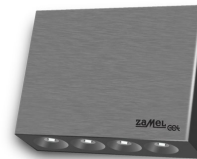
Conforms to ANSI/UL standard UL-2108
Certified to CAN/CSA standard 22.2-9.0

Power supply requirements:

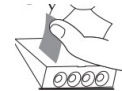
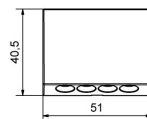
Requires a 12VDC output power supply and can also operate with a 14VDC source for automotive or RV applications.

Leads, connectors and power supply are supplied separately.

* RGB external controller needed sold separately.



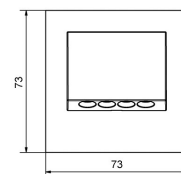
10 Standard



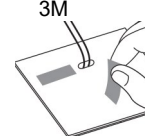
3M only



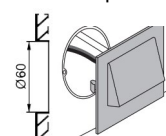
11 Standard



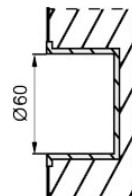
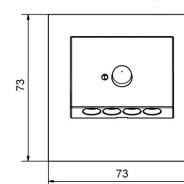
1. surface with 3M



2. with clip



11 PIR motion sensor



Ordering Matrix / Specification

Model	Type	Installation	Voltage	Function(s)	Finish color	Color
NTWL			1 (12volts)			
	10= Navi 11= Navi (with square plate)	1- Surface 2- Semi-recessed		1- Standard 2- Built-in PIR motion sensor 3- Built-in battery backup	1- Aluminium 2- Stainless steel 3- Graphite 5- White 6- Black	1- White 2- Warm white 3- Red 4- Green 5- Blue 6- RGB

* For led controller ask factory



Natech Industrie

1995 Francis Hughes, Laval, Qc, H7S 2G2: (450) 629-1169, F: (450) 629-1168, www.natechlighting.com, service@natechlighting.com

This specification is valid as of 2022-09 and is subject to change without notice. Please confirm with the manufacturer before placing an order.
Copyright 2014 Natech Industrie. All rights reserved.

©2015-08

Project :	Date :
Cat. No. :	Type :
Notes :	Volts :

Applications:

Ideal for areas where intelligent and RGB LED solutions are required.

- For decor, ambiance and public safety.
- Architectural accentuation with warm and cool white or ambiance creation with RGB versions..

Suitable for indoor architectural, hospitality, commercial and residential applications.

Look for other LEDIX IP56 rated products for outdoor applications.

Housing:

Stainless steel housing polished or painted aluminium precision fit parts and assembly.

Source:

0.56W	Cool white 5900K 23 lumens
0.42W	Warm white 3100K 15 lumens
0.28W	In single color source
	RED = 630nm
	Green = 520nm
	Blue = 459nm
0.84W	For RGB

Finish:

Available in:

- Polished stainless steel finish
- Silver aluminium powder coated
- Graphite powder coated aluminium
- Old gold powder coated aluminium
- White
- Black

Options:

Choose one of the following:

1. Standard (IP44)

Mounting:

Standard Sona 12 can be only surface mount and 13, 14 can be only semi recessed with clips.

Certification :

Conforms to ANSI/UL standard UL-2108
Certified to CAN/CSA standard 22.2-9.0

Power supply requirements:

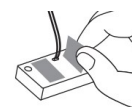
Requires a 12VDC output power supply and can also operate with a 14VDC source for automotive or RV applications.

Leads, connectors and power supply are supplied separately.

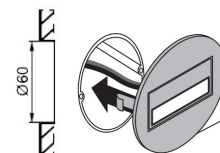
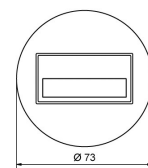
- * RGB external controller needed sold separately.



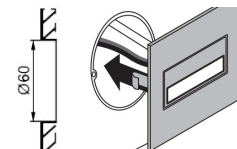
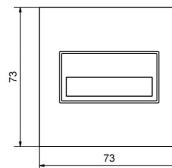
12 Standard



13 Standard



2. semi recessed with clips



2. semi recessed with clips

Ordering Matrix / Specification

Model	Type	Installation	Voltage	Function(s)	Finish color	Color
NTWL			1 (12volts)			
	12= Sona 13= Sona (with round plate) 14= Sona (with square plate)	1- Surface 2- Semi-recessed		1- Standard	1- Aluminium 2- Stainless steel 3- Graphite 5- White 6- Black	1- White 2- Warm white 3- Red 4- Green 5- Blue 6- RGB



Natech Industrie

1995 Francis Hughes, Laval, Qc, H7S 2G2: (450) 629-1169, F: (450) 629-1168, www.natechlighting.com, service@natechlighting.com

This specification is valid as of 2022-09 and is subject to change without notice. Please confirm with the manufacturer before placing an order.
Copyright 2014 Natech Industrie. All rights reserved.