

Project :

Date :

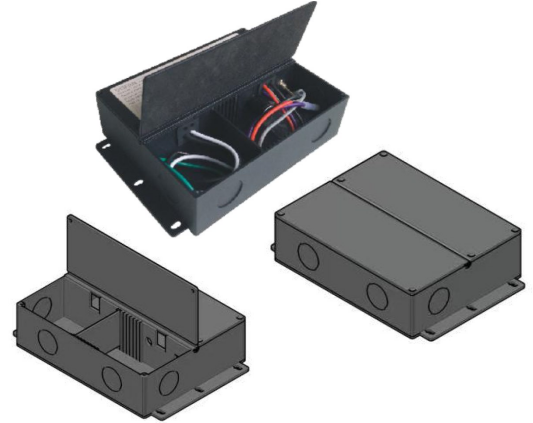
Cat. No. :

Type :

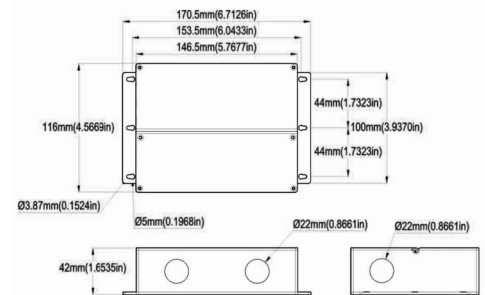
Notes :

Volts :

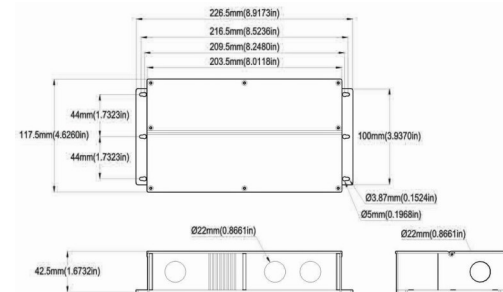
- Universal input, 110-277Vac
- Build in active PFC, typical power factor>0.95, THD<20%@120V Max. load
- High efficiency : up to 80%
- Load: 0.1-100%
- Short-circuit, over-temperature, over-load protection
- Full protection metal case, for dry, damp, wet location
- Flicker-free
- Suitable for LED lighting and moving sign applications
- Dim-all: Triac/0-10V/1-10V/10V PWM/Potentiometer
- Switch to PWM or Voltage Reduce output



Model		NT-OTM-VPA30-J12-F	NT-OTM-VPA30-J24-F	NT-OTM-VPA60-J12-F	NT-OTM-VPA60-J24-F
Output	DC Voltage	12V	24V	12V	24V
	Rated Current	2.5A	1.25A	5A	2.5A
	Rated Power	30W	30W	60W	60W
	Voltage Tolerance	±0.5V			
	Voltage Regulation	±0.5%			
	Load Regulation	±1%			
Input	Voltage Range	110-277VAC			
	Frequency Range	47-63Hz			
	Power Factor (Typ.) @ full load	0.99@120VAC 0.95@277VAC			
	THD (Typ.) @ full load	<20% @120VAC &277VAC			
	Efficiency (Typ.) @ full load	12V/24V 79% @120Vac 80%@277Vac 36V/48V 80% @120Vac 81%@277Vac			
	AC Current (Max.)	0.5A@110Vac			
	Inrush Current (Typ.)	7A, 50%, 420us @120Vac		12A, 50%, 480us @277Vac	
	Leakage current	<0.50mA			
Protection	Short Circuit	shut down o/p voltage, re-power on to recover after fault condition is removed			
	Over Loading	≤120% shut down o/p voltage, re-power on to recover after fault condition is removed			
	Over temperature	100°C±10°C shut down o/p voltage, automatically recover after cooling.			
Environment	Working TEMP.	-40~+60°C (see below derating curve)			
	Working Humidity	20~90%RH, non-condensing			
	Storage TEMP. Humidity	-40~+80°C, 10~95%RH			
	TEMP. coefficient	±0.03%/°C (0~50°C)			
Safety & EMC	Vibration	10~500Hz, 5G 10min./1 cycle, period for 60min. each along X,Y,Z axes			
	Safety standards	UL8750+UL1310			
	Withstand voltage	I/P-O/P:1.88KVAC			
	Isolation resistance	I/P-O/P:100MΩ/500VDC/25°C/70%RH			
	EMC EMISSION	FCC Part 15 B			
others	Net. Weight	0.7Kg		1.1Kg	
	Size	170.5*116*42mm (L*W*H)		226.5*117.5*42.5mm (L*W*H)	



NT-OTM-TD30-JA12/24



NT-OTM-TD60-JA12/24

Project :

Date :

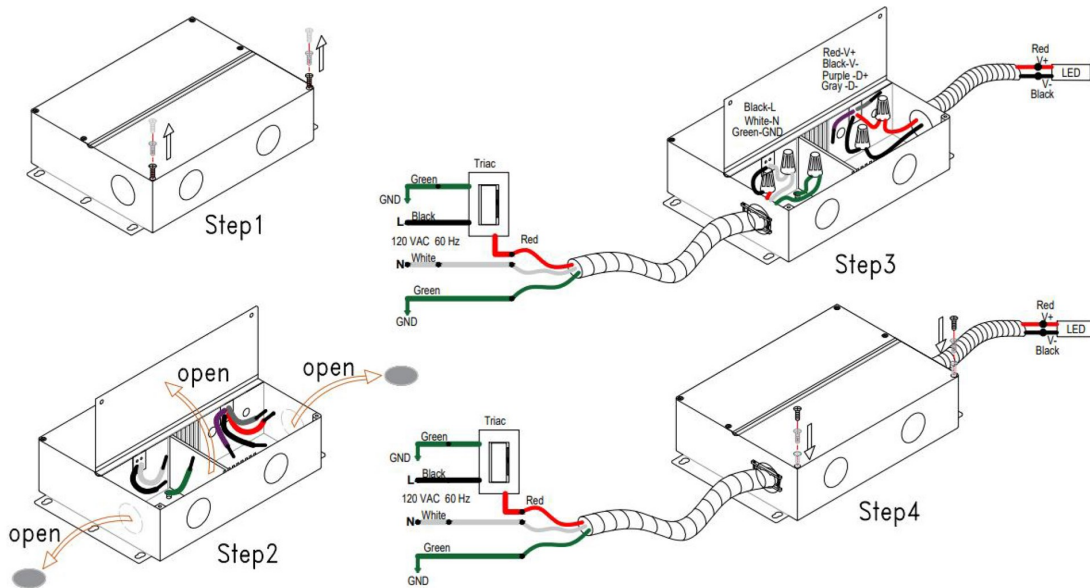
Cat. No. :

Type :

Notes :

Volts :

### MLV OR TRIAC ELV WIRING DIAGRAM AND FOR PWM SWITCH ON



### 0-10V WIRING DIAGRAM AND FOR PWM SWITCH ON

