

Project :

Date :

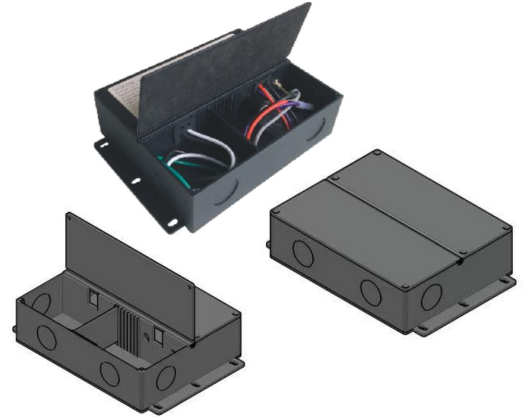
Cat. No. :

Type :

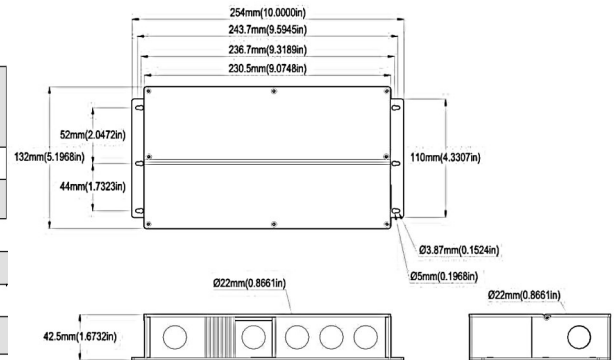
Notes :

Volts :

- Universal input, 110-277Vac
- Build in active PFC, typical power factor>0.95, THD<20%@120V Max. load
- High efficiency : up to 80%
- Load: 0.1-100%
- Short-circuit, over-temperature, over-load protection
- Full protection metal case, for dry, damp, wet location
- Flicker-free
- Suitable for LED lighting and moving sign applications
- Dim-all: Triac/0-10V/1-10V/10V PWM/Potentiometer
- Switch to PWM or Voltage Reduce output

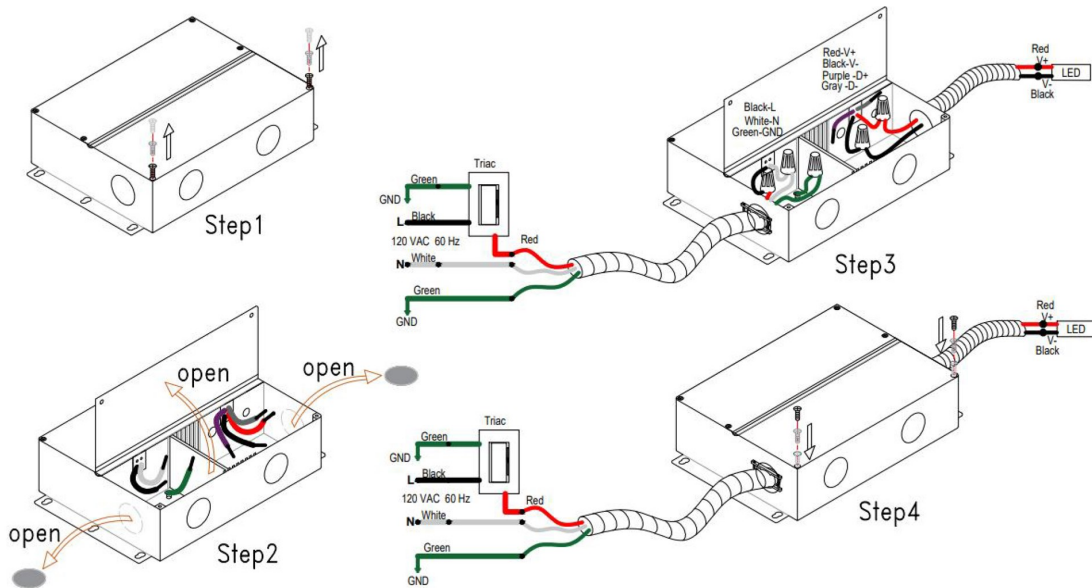


Model		NT-OTM-VPA150-J12-F	NT-OTM-VPA150-J24-F
Output	DC Voltage	12V	24V
	Rated Current	12.5A	6.25A
	Rated Power	150W	150W
Output	Voltage Tolerance	±0.5V	
	Voltage Regulation	±0.5%	
	Load Regulation	±2%	
	Voltage Range	110-277VAC	
	Frequency Range	47-63Hz	
Input	Power Factor (Typ.)	@ full load 0.99@120VAC 0.96@277VAC	
	THD (Typ.) @ full load	<20% @120VAC & 277VAC	
	Efficiency (Typ.) @ full load	12V/86% @120Vac 88% @277Vac	
	AC Current (Max.)	1.8A@110Vac	
	Inrush Current (Typ.)	15A, 50%, 1.4ms @120VAC;	
	Leakage current	<0.50mA	
	Protection	Short Circuit	shut down o/p voltage, re-power on to recover after fault condition is removed
Over Loading		≤120% constant current limiting, auto-recovery	
Over temperature		100°C±10°C shut down o/p voltage, automatically recover after cooling.	
Environment	Working TEMP.	-40~+60°C (see below derating curve)	
	Working Humidity	20~90%RH, non-condensing	
	Storage TEMP. Humidity	-40~+80°C, 10~95%RH	
	TEMP .coefficient	±0.03%/°C (0~50°C)	
	Vibration	10~500Hz, 5G 10min./1 cycle,period for 60min. each along X,Y,Z axes	
Safety& EMC	Safety standards	UL8750+UL1310	
	Withstand voltage	I/P-O/P:1.88KVAC	
	Isolation resistance	I/P-O/P:100MΩ/500VDC/25°C/70%RH	
others	EMC EMISSION	FCC Part 15 B	
	Net. Weight	1.8Kg	
others	Size	254*132*42.5mm (L*W*H)	



Project :	Date :
Cat. No. :	Type :
Notes :	Volts :

MLV OR TRIAC ELV WIRING DIAGRAM AND FOR PWM SWITCH ON



0-10V WIRING DIAGRAM AND FOR PWM SWITCH ON

